



P.O. Box 14770, Lenexa, KS 66285-4770
(913) 888-0606 • FAX (913) 888-8431
• www.bmccranes.com

Page 1 of 8
Date: Feb. 2002

Replaces: Form GD197B
Dated: April 1997

BMC's RT-300 Rough Terrain Crane is a self-propelled crane designed for lifting and material handling applications, with the special features of high maneuverability, high flotation, 4-wheel steer and 4-wheel drive. The basic unit consists of a chassis and hydraulic boom assembly. The chassis includes a frame, four hydraulic outriggers, engine, 6-speed transmission, front steering-driving axle, rear steering-driving axle, fuel tank, oil tank, control station and three-mode full-power steering. The boom assembly includes a hydraulic-powered rotating turret, hydraulic telescopic boom, hydraulic boom elevation and a hydraulic powered planetary gear winch. Hydraulic anti-two-block system is standard.

RT-300-2B: (Fold Down Outriggers)

4-section hydraulically extended boom with capacity of 30,000 pounds at 10 feet. Horizontal reach of 60 feet and maximum height of 70 feet.

RT-300-2BO: (Out & Down Outriggers)

4-section hydraulically extended boom with capacity of 30,000 pounds at 10 feet. Horizontal reach of 60 feet and maximum height of 70 feet.

General:

	RT-300-2B	RT-300-2BO
Length:		
Overall	29 feet 10 inches	30 feet 0 inches
Chassis	16 feet 7 inches	17 feet 10 inches
Width	8 feet 4 inches	8 feet 4 inches
Height	11 feet 2 inches	11 feet 2 inches
Wheelbase	9 feet 3 inches	9 feet 3 inches
Ground Clearance (Chassis)	15 inches	15 inches
Angle of Approach	26 degrees	20 degrees
Angle of Departure	24 degrees	20 degrees
Turning Radius 4-Wheel Steer: (Min.)		
Outside Tire Centerline Radius	14 feet 11 inches	14 feet 11 inches
Vehicle Clearance Circle (Dia.)	34 feet 0 inches	34 feet 0 inches
Road Speed	26 miles per hour	26 miles per hour
Gradeability on Concrete	70 percent grade	70 percent grade
Outriggers:		
Spread:		
Pin to Pin of Shoe	12 feet 9 inches	16 feet 0 inches
Overall Width	14 feet 5 inches	17 feet 10 inches
Ground Penetration	5 inches	10 inches
Weight For Basic Machine:		
Total	44,100 pounds	46,500 pounds
Front Axle	22,600 pounds	23,290 pounds
Rear Axle	22,500 pounds	23,190 pounds
Drawbar Pull:		
John Deere Engine	23,400 pounds	
Cummins Engine	27,700 pounds	
Hoist Pull (Bare Drum)	10,000 pounds	

General: (Cont'd)

	<u>Boom Movement</u>	<u>Boom Speeds</u>
Rotation	Continuous	3.5 RPM
Elevation	0-70 degrees	15 Seconds
Extension	40 feet 0 inches	21 Seconds
Hoist Line Speed	320 FPM	
Maximum Boom Height: (Nominal)	<u>Vertical Reach</u>	<u>Horizontal Reach</u>
Without Boom Extension	70 feet 0 inches	60 feet 0 inches
With Boom Extension	87 feet 11 inches	80 feet 0 inches

Engine:**Standard:**

John Deere Model #6068D, naturally aspirated, six cylinder, diesel; 6.8 liter (414 cubic inch displacement); bore 4.2 inches, stroke 4.33 inches. Rated 130 HP at governed speed of 2,500 RPM. 335 ft. pounds maximum torque at 1,200 RPM. Water-cooled. 78-amp alternator. Oil capacity, 18 quarts. Coolant capacity, 22 quarts. Oil pressure, 50 PSI at 2000 RPM.

Fuel Tank:

50 gallon capacity.

Optional Engine and Engine Accessories:**Cummins — 6BT5.9: (DE-29)**

Cummins Model 6BT5.9 diesel engine, turbocharged six cylinder, 5.9 liter (359 CID). Bore 4.02 inches, stroke 4.72 inches. Rated 152 HP at 2,500 RPM. 410 ft. pounds maximum torque at 1,500 RPM. 63 amp alternator. Oil capacity, 17 quarts. Coolant capacity, 26 quarts. Oil pressure, 30-60 PSI. (Net Weight: 200 pounds less)

Engine Heater: (EH-1)

Heater for Cummins diesel engine. Engine coolant heater installed with hoses in coolant system to circulate warm water through engine. Plugs into 120 volt AC extension cord.

Ether Injection System: (EI-1, 2)

Ether starting aid is controlled by switch at operator station and injects ether directly into intake manifold.

Engine Shutdown Gauges: (SS-7)

System automatically shuts engine down when high engine water temperature or low engine oil pressure occurs.

Engine Covers: (EC-3, 4)

Quick-detach side covers. (Net Weight: 40 pounds)

Transmission:**Standard:**

Funk Manufacturing Co. Model 2000 powershift transmission with 6 forward speeds and 3 reverse. Provides full powershifts at maximum engine speed in all gears. All shifting is done with a single-lever electrical control in the operator compartment. The transmission includes an automatic rear axle disconnect for two-wheel drive in speeds 4, 5 and 6 in forward and speed 3 in reverse. The other speeds are four-wheel drive. A torque converter with a stall torque ratio of 2.696:1 attaches directly to engine fly wheel to drive transmission. Equipped with oil cooler and filter. With the optional Cummins engine, the stall torque ratio is 2.640:1.

Forward gear ratios and speeds:

GEAR RATIO SPEED (mph)

1st	8.20	2.7
2nd	4.64	4.8
3rd	3.53	6.3
4th	2.00	11.2
5th	1.41	15.8
6th	.80	26

Reverse gear ratios and speeds:

GEAR RATIO SPEED

1st	8.20	2.7
2nd	3.53	6.3
3rd	1.41	15.8

Front Axle:**Standard:**

Rockwell Model DLH243 planetary driving-steering axle with 16.67 to 1 ratio. Rigid mounted on front. Axle has limited-slip differential.

Rear Axle:**Standard:**

Rockwell Model DLH243 planetary driving-steering axle with 16.67 to 1 ratio. Rear axle is mounted with rubber elements to allow oscillation. Axle is not available with no-spin or limited-slip differential.

Brakes:**Standard:**

Four-wheel hydraulic with hydraulic booster. 17 inch x 4 inch brake at each wheel. Spring-applied and hydraulically released, disc-type parking brake on transmission.

Steering:**Standard:**

Hydraulic steering unit with two 3.5 inch cylinders attached to each axle. Allows limited steering when engine is not running. Steering wheel and selector valve control 3-mode steering: crab, round and 2-wheel front axle steering.

Tires:**Standard:**

17.5 x 25, 20-ply rating, mud lug.

Optional Tires:**Spare Wheel and Tire, Standard Size: (SW-21)**

Extra wheel with 17.5 x 25, 20-ply rating tire mounted, ready for service. (Net Weight: 530 pounds)

Chassis:**Standard:****Steps:**

Grip-strut steps and grab bars provide easy two-step access to operator's compartment.

Outriggers:**RT-300-2B: (Fold Down Outriggers):**

Four independently controlled outriggers of swing-down design. Hydraulic cylinders are equipped with direct connected holding valves. Foot pad dimensions: 20 inches by 16 inches.

RT-300-2BO: (Out & Down Outriggers):

Four independently controlled outriggers of out and down design. All cylinders are equipped with direct connected holding valves. Pads are removable and stow on chassis when roading crane. Foot pad dimensions are 22 inches octagon.

Sheave Block and Downhaul Weight Storage:

Tray on left-hand side behind hydraulic tank for storing sheave block and downhaul weight for single-part line. Sheave block and downhaul weight are securely retained by chain and locking device.

Optional Chassis Accessories:**Auxiliary Front Winch: (AW-9, 11)***

Planetary gear winch mounted on front outrigger frame with a single-lever control on the operator console. Hydraulic powered to provide bare drum line pull of 10,000 pounds and 84 feet per minute line speed. Winch drum is 9.75 inches diameter by 13 inches long. Includes 90 feet of 9/16 inch wire rope, wedge socket and 5-ton hook. A pulling eye is provided on the outrigger frame below the winch for two-parting the line with a sheave block (sheave block not included). Winch is mounted with four bolts and connected by quick-connect couplings for easy mounting and removal. (Net Weight: 480 pounds)

* Operator Guard (OG-8) must be ordered with Auxiliary Front Winch.

Auxiliary Front Winch Plumbing: (AWP-1)*

Control valve and all plumbing to quick-connect fittings at front of chassis for auxiliary front winch (AW-9). (Net Weight: 30 pounds)

* Operator Guard (OG-8) must be ordered with Auxiliary Front Winch Plumbing.

Lifting Eyes: (LR-8)

Consists of four eyes on chassis and turntable so slings can be attached for lifting crane.

(Net Weight: 40 pounds)

Optional Chassis Accessories: (Cont'd)**Towing Eyes: (LR-6)**

Consists of four eyes, two on front and two on rear, for towing. (Net Weight: 40 pounds)

Spreader Bar and Sling Assembly: (LS-11)

Spreader bar with four wire rope assemblies to allow balanced lifting of crane. Must be used with Lifting Eyes (LR-8). Order lifting eyes separately. (Net Weight: 425 pounds)

Pintle Hook Front: (PH-11, 16)

T-60-AOL Holland pintle hook mounted on front outrigger frame member, rated for 24 tons.
(Net Weight: 15 pounds)

Pintle Hook Rear: (PH-12, 16)

T-60-AOL Holland pintle hook mounted on rear frame member, rated for 24 tons. (Net Weight: 15 pounds)

Operator Compartment:**Standard:****Operator Compartment:**

Operator control station provides one-position access to all chassis and crane controls.

Mirrors:

A mirror on each side of the operator's compartment provides visibility behind the crane.

Operator Compartment Options:**All Weather Cab: (WC-29, 30)**

Consists of rigid-mounted canopy section and two removable hinged doors with safety glass. Rugged canopy structure with laminated glass front and top. Doors are equipped with keyed locks to protect operator's compartment. Includes heater with two-speed fan, interior light, 12-volt electric windshield wiper and a variable-speed electric defroster fan. (Net Weight: 260 pounds)

Window Wiper - Top Window: (WW-1)

12-volt electric wiper on top window operated with its own switch.

Operator Guard: (OG-8)

Tubular steel weldment with heavy expanded steel mesh top and grille front section. May be used with or without a cab. Guard will tilt to allow cab windows to be cleaned. (Net Weight: 140 pounds)

Operator's Suspension Seat - Seats Inc. - Cloth: (SSO-3)

Full-suspension with adjustments for height, tilt, fore-aft, operator weight and with armrest angle adjustment.

Operator's Suspension Seat - Seats Inc. - Vinyl: (SSO-5)

Full-suspension with adjustments for height, tilt, fore-aft, operator weight and with armrest angle adjustment.

Operator's Suspension Seat - Grammer: (SSO-4)

Full-suspension with adjustments for height, tilt, fore-aft, operator weight, lumbar support and with armrest angle adjustment. (Net Weight: 40 pounds)

Noise Reduction Kit: (NR-3)

Noise reduction panel over control valves. Also grille on front of unit to vent heat from valve area. Reduces noise and helps control heat in cab. (Net Weight: 20 pounds)

Air Conditioning:

Provides factory system using R134a refrigerant. Compact AC unit mounted in operator area, fan cooled condenser mounted under fuel tank and belt driven compressor with magnetic clutch driven by engine.

Electrical System:**Standard****Battery:**

12 Volt, Group 31, 950 CCA battery.

Instrument Group:

Located at operator's station and includes fuel gauge, transmission oil temperature gauge, ammeter, oil pressure, water temperature and hydraulic oil temperature gauges. Key switch, starter and horn button on instrument panel. Indicator shows position of rear axle steering. Hourmeter records only during actual engine operation. Also included are indicator lights for two-wheel drive, four-wheel drive and parking brake.

Electrical System: (Cont'd)**Back-Up Alarm:**

Provides pulsating sound from 97 dB alarm when ignition is on and transmission is in reverse.

Optional Electrical Accessories:**Outrigger Alarm System: (OW-2)**

112 dB alarm with alternating two-tone sound is actuated by a switch when the "outrigger down" controls are operated.

Strobe Light: (SL-3)

Yellow strobe light mounted on top of engine hood for high visibility. Flashes 60-120 times per minute. Strobe draws only one-half amp. Includes switch in operator compartment.

Lighting Kit: (LK-2)

Two modular, dual-beam headlights with turn signal lights. Taillights with brake and turn signal lights. Back-up lights. Turn signal and flasher switch. Lights installed in back of instrument gauges for night time operation. High-beam indicator lamp. (Net Weight: 15 pounds)

Amber Rotating Beacon: (ARB-4)

Amber rotating beacon mounted on top of engine hood for high visibility all around crane. Includes switch in operator compartment. (Net Weight: 10 pounds)

Boom Work Lights: (WL-3)

Two halogen work lights, one on left side of boom to light boom tip and one on the turret to light ground under boom tip. Includes switch in operator compartment. (Net Weight: 10 pounds)

Hydraulic System:**Standard:**

Triple vane pump, mounted on and driven by the main transmission, delivers 9, 26, and 44 GPM at 3,000 PSI and 2,500 RPM engine speed. System protected by relief valves, 100 mesh suction-line strainer and 10 micron return-line filter.

Hydraulic Reservoir:

70 gallon capacity, equipped with 40 micron breather filter on top and oil level gauge on side.

Boom Assembly:**Standard:**

High strength steel construction, equipped with bearing pads for efficient support and extension. Double-acting hydraulic cylinders extend and retract the second and third boom sections. Double runs of high strength leaf chain extend and retract the fourth section. The second stage extends first and retracts last, controlled by sequencing valves in the boom. The third and fourth sections extend and retract together proportionally, controlled by chains. The extension system is equipped with a holding valve. Twin, double-acting hydraulic cylinders control the boom elevation and are equipped with direct connected holding valves. Boom length markings and boom angle indicators are provided on both sides of the boom. Boom tip sheaves are provided for four-part line. Provision for addition of sheave for optional five-part line.

Boom Hoist:**Standard:**

Turret-mounted, planetary gear winch, is hydraulically powered to provide a bare-drum line pull of 10,000 pounds and a speed of 320 feet per minute. Line speed of the fourth layer on the drum is 412 feet per minute. Drum diameter is 9.75 inches, length is 13.6 inches. Includes 375 feet of 1/2 inch wire rope, 6 X 25 IWRC-XIP, 26,600 pound breaking strength.

Boom Rotation:**Standard:**

Heavy-duty ball bearing with external teeth supports boom. Rotation is by hydraulic motor and compound planetary gear drive. A spring-applied hydraulically released brake and an over-running load valve are provided. Hydraulic centerpost and electric slip rings allow continuous rotation.

Anti-Two-Block Device:**Standard:**

Designed to prevent damage to hoist rope and/or machine components from accidentally pulling sheave block or downhaul weight against boom tip. Consists of pivot arm at boom tip that is moved upward by sheave block or downhaul weight as hook approaches boom tip. Pivot arm actuates electric switch that is connected by cable reel to solenoid dump valve in hydraulic circuit. This valve will dump the "hoist raise", "crowd extend" and "boom lower" circuits. No other circuits are affected. These circuits are returned to normal operation by operating the "hoist lower" or "crowd retract" control. Key-operated, momentary override switch located under dashboard.

Sheave Block:**Standard:**

Double sheave block for four-part-line requirements. 12 inch O.D. sheaves for 1/2 or optional 9/16 inch diameter wire rope. Swivel hook with safety latch. Includes bar on top to actuate trip arm of Anti-Two-Block Device. 440 pound weight provides positive overhaul.

Optional Boom Attachments:**Angle Indicator: (AI-1)**

Large pointer and quadrant located under boom, in addition to standard angle indicators on side of boom.
(Net Weight: 10 pounds)

Boom Extension - 20 Ft., Offset: (BE-20)

Provides 20 feet of additional length for lifting loads with load line. May be set at 0 (in-line), 15 or 30 degrees offset. Swing-away boom extension may be stowed alongside base boom section when not in use. Tip sheave, knuckle sheave, attaching brackets and pins included. When boom extension is in the towed position, the crane payload must be reduced by 500 pounds. When boom extension is extended to the work position, the main boom payload must be reduced by 1,000 pounds. Includes anti-two-block system. Requires Downhaul Weight and Hook option, DH-1. (Net Weight: 770 pounds)

Downhaul Weight and Hook: (DH-1)

Downhaul weight and 5-ton swivel hook to use with existing wedge socket on 1/2 inch or 9/16 inch load line. Specially designed to work with the anti-two-block system and to clamp the dead end of the rope.
(Net Weight: 170 pounds)

Wire Rope - Spin Resistant: (WR-1)

9/16 inch diameter, rotation-resistant load line, 450 feet long. Includes 5-part adapter for existing 4-part block, 5/8 inch wedge socket and additional boom tip sheave for 5-part line. The 5-part adapter includes a striker plate to actuate the anti-two-block system. (Net Weight: 170 pounds)

Load Moment Indicator: (LMI)

Warns operator of impending overload with audible and visual signals. Prevents overload by stopping boom functions that cause overload. Readouts for load, boom angle, boom length and load radius. Includes sensors and special electrical slip rings. (Net Weight: 50 pounds)

Load Indicator: (LI)

Three-sheave load sensor on top of boom. Special electrical collector rings in turntable. Readout box on top of instrument panel shows load for 1-part, 4-part and 5-part lines. (Net Weight: 50 pounds)

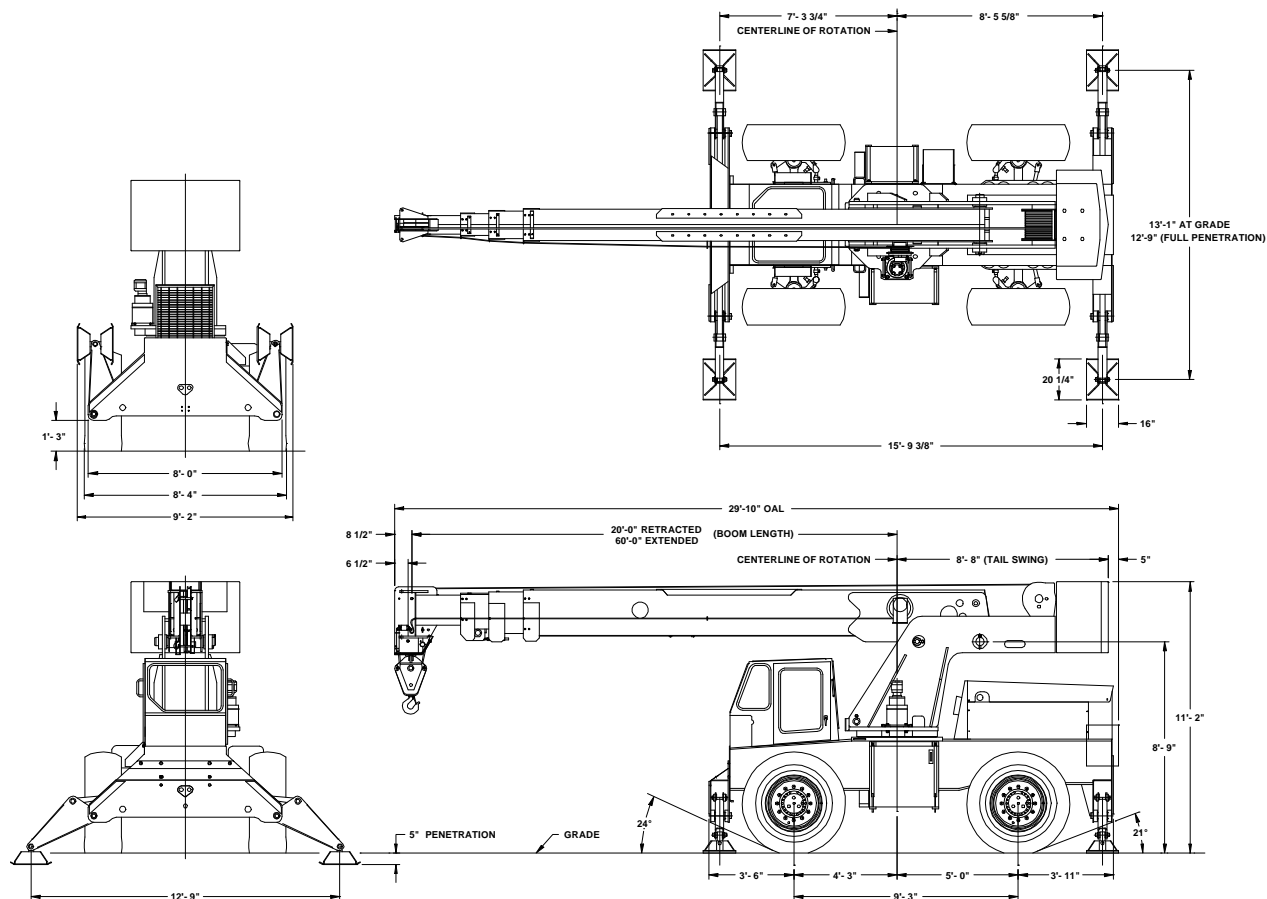
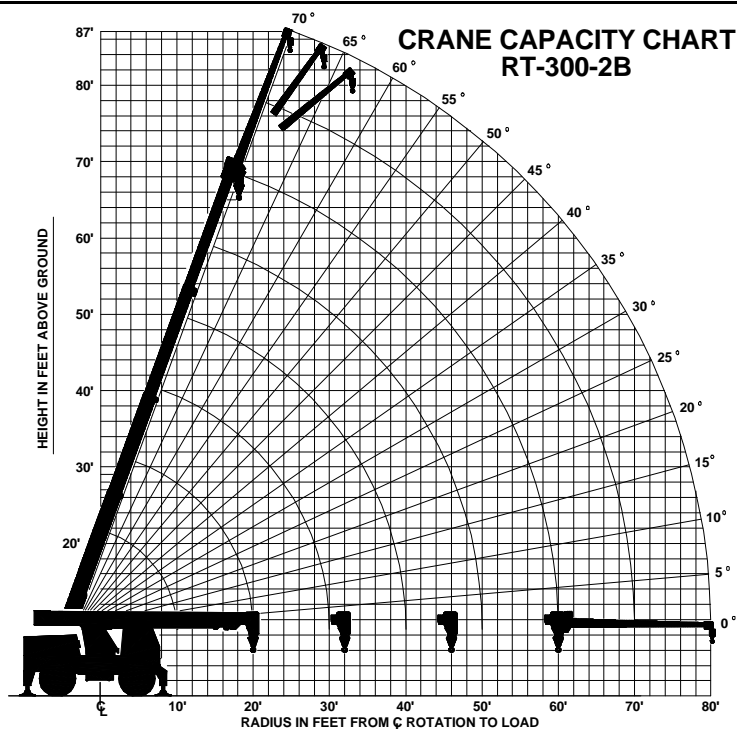
Should you, as the end user, require an option or special equipment on your RT-300-2B that is not listed on our sales literature, please contact your dealer salesperson or the factory to receive a special quoted price.

CAPACITIES APPLY TO OPERATION ON FIRM LEVEL SURFACE					
LOAD RADIUS FEET	MAIN BOOM CAPACITIES IN POUNDS				
	360° ROTATION		OVER FRONT		
	ON RUBBER	ON OUTRIGGERS	ON RUBBER	ON OUTRIGGERS	
MAIN BOOM	10	19150	30000	26300	30000
	12	14050	28500	22500	28500
	14	11800	25950	17950	25950
	16	9000	22500	14500	22550
	18	7500	19500	11850	19500
	20	6150	17050	9900	17050
	22	5050	14550	8100	15000
	24	4050	12350	6750	13300
	26	3300	10550	5650	11900
	28	2800	9100	4750	10650
	30	2250	8000	4150	9600
	32	1800	7150	3550	8600
	34	1500	6400	3150	8050
	36	1200	5800	2850	7500
	38	1050	5350	2650	6950
	40	900	4950	2400	6500
	44	700	4250	1900	5600
	48		3600	1600	4850
	52		3150	1300	4150
	56		2750	1050	3650
60		2300	850	3200	
BOOM EXTENSION	64		1950		2300
	68		1750		2300
	72		1500		2250
	76		1300		1950
	80		1100		1700

CAPACITIES ON OUTRIGGERS ARE 85% OF TIPPING LOADS - ON RUBBER 75% OF TIPPING.
CAPACITIES ABOVE BOLD LINES ARE LIMITED BY STRUCTURAL OR HYDRAULIC CAPABILITIES.
CAPACITIES BELOW BOLD LINES ARE LIMITED BY TIPPING. DO NOT POSITION BOOM AT LOAD
RADII WHERE NO LOAD CAPACITIES ARE SHOWN.

20 FOOT - BOOM EXTENSION CAPACITIES							
BOOM EXTENSION OFFSET ANGLE	MAIN BOOM ANGLE						
	0°	15°	30°	40°	50°	60°	70°
0°	2300	2400	2700	3100	3700	4800	6200
15°	0	2300	2400	2600	2900	3400	4100
30°	0	0	2300	2400	2500	2700	3100

CAUTION: BOOM EXTENSION LOADS MUST NOT EXCEED MAIN BOOM CAPACITY.
BOOM EXTENSION DEDUCT: 500 LBS. WHEN STOWED ON BASE BOOM,
1000 LBS. IN WORK POSITION WITH LOAD ON MAIN BOOM.



CAPACITIES APPLY TO OPERATION ON FIRM LEVEL SURFACE						
LOAD RADIUS FEET	MAIN BOOM CAPACITIES IN POUNDS					
	360° ROTATION			OVER FRONT		
	ON RUBBER	O/R'S IN & DOWN	O/R'S OUT & DOWN	ON RUBBER	ON OUTRIGGERS	
MAIN BOOM	10	18800	25500	30000	24900	30000
	12	15200	20800	28500	21400	28500
	14	11000	16000	25950	18100	25950
	16	8800	12600	22500	14300	22500
	18	7200	10300	19500	11800	19500
	20	5900	8500	17050	9700	17050
	22	4900	7100	15000	8200	15000
	24	4050	5900	13300	7000	13300
	26	3300	4900	11900	6000	11900
	28	2800	4100	10650	5100	10650
	30	2250	3500	9600	4400	9600
	32	1800	3000	8600	3800	8600
	34	1500	2600	8050	3400	8050
	36	1300	2200	7500	3000	7500
	38	1100	2000	6950	2700	6950
	40	1000	1800	6500	2500	6500
	44	700	1400	5700	2100	5700
	48		1100	5000	1700	5000
	52		900	4400	1400	4400
	56		700	4000	1150	4000
60		500	3500	900	3500	
BOOM EXTENSION	64			2700		2700
	68			2500		2500
	72			2400		2400
	76			2100		2100
	80			1900		1900

OUTRIGGERS MUST BE FULLY EXTENDED OUTWARD TO USE THE O/R'S OUT & DOWN CAPACITIES.
OVER FRONT, ON RUBBER CAPACITIES ARE FOR SMOOTH PAVED SURFACE.
FOR UNPAVED SURFACE REDUCE CAPACITY BY 25%.
CAPACITIES ON OUTRIGGERS ARE 85% OF TIPPING LOADS - ON RUBBER 75% OF TIPPING.
CAPACITIES ABOVE BOLD LINES ARE LIMITED BY STRUCTURAL OR HYDRAULIC CAPABILITIES.
CAPACITIES BELOW BOLD LINES ARE LIMITED BY TIPPING.
DO NOT POSITION BOOM AT LOAD RADI WHERE NO LOAD CAPACITIES ARE SHOWN.

20 FOOT - BOOM EXTENSION CAPACITIES							
BOOM EXTENSION OFFSET ANGLE	MAIN BOOM ANGLE						
	0°	15°	30°	40°	50°	60°	70°
0°	2300	2400	2700	3100	3700	4800	6200
15°	0	2300	2400	2600	2900	3400	4100
30°	0	0	2300	2400	2500	2700	3100

CAUTION: BOOM EXTENSION LOADS MUST NOT EXCEED MAIN BOOM CAPACITY.

BOOM EXTENSION DEDUCT: 500 LBS. WHEN STOWED ON BASE BOOM.
1000 LBS. IN WORK POSITION WITH LOAD ON MAIN BOOM.

