



P.O. Box 14770, Lenexa, KS 66285-4770
(913) 888-0606 • FAX (913) 888-8431
• www.bmccranes.com

Page 1 of 10
Date: May 2002

Replaces: Form DD102E
Dated: Feb. 2002

The IC-200-E is a self-propelled Industrial Crane designed for yard material handling and maintenance and repair of equipment, with special features of self-loading cargo decks, 4-wheel steer and front-wheel drive (4-wheel drive optional). The basic unit consists of a chassis and hydraulic boom assembly. The chassis includes a frame, four hydraulic independently controlled outriggers, engine, torque converter, powershift 4-speed transmission, front planetary drive/steer axle and rear steer only axle, fuel tank, hydraulic tank, control station, power steering and power brakes. The boom assembly includes a hydraulic powered continuous rotation turret, three or four section telescopic boom, hydraulic boom elevating cylinder, hydraulic boom extension cylinders and hydraulic powered hoist.

IC-200-1E:

3-section hydraulically extended boom with capacity of 30,000 pounds at a 6 foot load radius. Horizontal reach of 28 feet and vertical reach of 37 feet 6 inches.

IC-200-2E:

3-section hydraulically extended boom with capacity of 30,000 pounds at a 6 foot load radius. Horizontal reach of 36 feet 2 inches and vertical reach of 45 feet 4 inches.

IC-200-3E:

4-section hydraulically extended boom with capacity of 30,000 pounds at a 6 foot load radius. Horizontal reach of 50 feet and vertical reach of 58 feet 8 inches.

General:

Weight:	Total	Front Axle	Rear Axle
IC-200-1E	27,300 pounds	11,930 pounds	15,370 pounds
IC-200-2E	27,750 pounds	13,300 pounds	14,450 pounds
IC-200-3E	29,950 pounds	14,700 pounds	15,250 pounds

Length:

Overall:	
IC-200-1E	20 feet 0 inches
IC-200-2E	22 feet 6 inches
IC-200-3E	22 feet 6 inches

Chassis 14 feet 11 inches

Width 96 inches

Height:

Overall	7 feet 11-1/2 inches
Deck	3 feet 10-1/2 inches

Wheelbase 97 inches

Ground Clearance 13-3/4 inches

Angle of Approach 24 degrees

Angle of Departure 24 degrees

Outriggers:

Spread	11 feet 11-5/8 inches
Penetration	3-1/4 inches

Turning Radius:

4-Wheel Steering 13 feet 9 inches

Aisle Width for 90° Turn 11 feet 9 inches

Steering Modes Rear Steer & Round Steer

General: (Cont'd)**Road Speed** 20 MPH**Gradeability (Calculated)** 75 percent (37 degrees)**Boom Movement:**

	IC-200-1E	IC-200-2E	IC-200-3E
Rotation	Continuous	Continuous	Continuous
Elevation	0 to 73 degrees	0 to 73 degrees	0 to 73 degrees
Extension	15 feet 4 inches	21 feet	34 feet 6 inches

Boom Speeds:

Rotation	1.8 RPM	1.8 RPM	1.8 RPM
Elevation	21 seconds	21 seconds	21 seconds
Extension	26 seconds**	35 seconds**	53 seconds**

**With synchronized hoist cable.

Sheave Height: (Nominal)

W/O Boom Extension	37 feet 6 inches	45 feet 4 inches	58 feet 8 inches
With Boom Extension	51 feet 8 inches	59 feet 6 inches	73 feet 8 inches

Horizontal Reach:

W/O Boom Extension	28 feet	36 feet	50 feet
With Boom Extension	43 feet	51 feet	66 feet

Engine:**Standard: (ET-38, 39) (Compliant Exempt)****GM 4.3L V-6 EFI w/Dual Fuel: (ET-38, 39) (CARB Compliant)**

GM Model 4.3L V-6 industrial gasoline engine complete with throttle body electronic fuel injection, dual fuel and engine management system. Includes water cooled, 262 CI displacement, bore 4.00 in., stroke 3.48 in., 110 HP at governed speed at 2,500 RPM. Maximum torque 243 ft. lbs. at 2,200 RPM. Also includes special exhaust valves, seats and valve rotators for use with LPG, 100-amp alternator, 30 gallon fuel tank and 43 lb. LPG tank. High temperature and low oil pressure shutdown is included in engine management system.

Standard Engine Accessories:**Engine Shut Down Feature: (Gas EFI Only)**

System automatically shuts engine down when high engine water temperature or low engine oil pressure occurs.

Optional Engine and Engine Accessories:**Cummins Turbo-4BT3.9: (ET-30, 31)**

Cummins Model 4BT3.9 turbocharged diesel engine. Water cooled, 4-cylinder, 239 CID, bore 4.02", stroke 4.72", 110 HP at governed speed of 2,500 RPM. Maximum torque is 293 ft. lbs. at 1,500 RPM. 62-amp alternator included. 30 gallon fuel tank capacity. (Net Weight: 75 pounds)

Spark Arrester Muffler: (SA-6, 7)

Spark arrester muffler used in addition to standard muffler. (Net Weight: 10 pounds)

Catalytic Convertor: (CC-5, 7)

Catalytic converter for engine. Reduces engine emissions. (Net Weight: 10 pounds)

Engine Heater: (EH-2, 3)

Heater for engine. Engine coolant heater installed with hoses in coolant system to circulate warm water through engine. Plugs into 120 volt AC extension cord. 1,500 watts.

Ether Injection System: (EI-1)

For Cummins engine. Ether starting aid is controlled by switch at operator station and injects ether directly into intake manifold.

Engine Shut Down Gauges: (SS-10) (Diesel Only)

System automatically shuts engine down when high engine water temperature or low engine oil pressure occurs.

Transmission:**Standard 2-Wheel Drive:**

Powershift transmission with four speeds in forward and reverse. Provides powershifts at any engine speed in any gear. All shifting is done with a single lever electrical control mounted on the steering column. Multiple-disc clutch packs operated by solenoid valves provide reverse, neutral, forward and speed selection. Equipped with oil cooler and filter.

Optional 4-Wheel Drive Transmission:

Same as 2WD transmission with an additional output shaft to drive the rear axle. Electro-hydraulic control for shifting between 2WD and 4WD. This option includes the 4-wheel drive axle listed below.
(Net weight 100 pounds)

Transmission Gear Ratios:**Forward and Reverse (2WD & 4WD)**

1st	5.72 to 1.0
2nd	3.23 to 1.0
3rd	1.77 to 1.0
4th	1.00 to 1.0

Torque Converter:**Standard:**

Stall torque ratio of 2.2:1, attached to engine flywheel.

Front Axle:**Standard: (AO-3)**

Planetary drive/steer front axle with 15.78 to 1.0 ratio. Differential equipped with "limited slip" feature. Driving effort is applied to wheel that has traction. Front axle mounted rigidly to frame.

Calculated Performance:

<u>Gear</u>	<u>Drawbar Pull (pounds)</u>	<u>Travel Speeds (MPH)</u>
1st	19,000*	3
2nd	10,000*	6
3rd	5,700*	11
4th	3,000*	20

*Calculated for GM 4.3L engine.

Rear Axle:**Standard 2-Wheel Drive:**

Steering axle with 1-½ degree oscillation in either direction.

Optional 4-Wheel Drive: (AO-4)

Planetary drive/steer axle with 24.98 to 1.0 ratio. Differential is not "limited slip" in rear axle. 1-1/2 degree oscillation in either direction. (Axle ratio compatible with 4WD transmission output for front axle match.)
(Net Weight: 100 pounds)

Steering:**Standard:**

Hydraulic steering unit with two 3-inch cylinders attached to each axle. Allows limited steering when engine is not running. A switch on the control panel is used to select rear-wheel steering or four-wheel steering.

Optional:**Electronic Directional Steering, 3 Position: (EDS-1)**

Three steering modes instead of the standard two with the added feature of electronic realignment of the front and rear wheels when changing from one mode to another. The steering modes are round, crab and 2-wheel rear steering. (Net Weight: 15 pounds)

Brakes:**Standard:**

Split-system, four-wheel hydraulically-boosted multiple-plate wet disc brakes. Uses mineral oil. Hand lever actuated disc-type parking brake on transmission.

Tires:**Standard 2-Wheel & 4-Wheel Drive:**

385/65D22.5, 16-Ply Rating, high-traction on/off road tread.

Tire Options:**High Traction Tread, Non-Marking: (TO-35)**

Non-Marking, 385/65D22.5, 16-ply, high-traction on/off road tread.

Foam Filling of Tires: (FF-5)

Foam filling of four IC-200 tires. (Net Weight: 2,000 pounds)

Spare Tire and Wheel Mounted, Radial: (SW-30)

Extra wheel with 385/65D22.5 tire mounted, ready for service. (Net Weight: 335 pounds)

Spare Non-Marking Tire and Wheel, Mounted: (SW-33) (Specify Left or Right)

Extra wheel with 385/65D22.5 non-marking tire mounted, ready for service. (Net Weight: 335 pounds)

Chassis:**Standard:****Cargo Deck:**

Total Deck Area: 78 Square Feet (Front deck 95" X 61", RH side deck 175" X 28".) A maximum of 17,000 pounds may be carried on the deck when centered over or between axles. Seven stake pockets are provided along edges of deck for 1 inch pipe stakes. Stakes furnished. Cargo decks have skid resistant coating.

Steps:

A step is located on each front corner providing access to deck area.

Outriggers:

Four hydraulic outriggers of box-beam construction. Independent control for each outrigger. Hydraulic cylinders are equipped with direct-connected holding valves. Pad dimensions: 11 inches x 16 inches

Pulling Eyes:

Two heavy eyes in front bumper provide for attachment of hook block so main winch line can be used for pulling loads at or near floor level. Also for anchoring tag lines from load on hook.

Accessory Storage Box:

Consists of front deck plate with removable and lockable cover, and box for carrying sheave block and other items. Storage box is 14" deep x 10-1/2" long x 36-1/2" wide.

Lifting Rings:

Consists of four rings, one at each corner of the load deck, so sling can be attached for lifting crane. Rings hang below deck surface when not in use.

Chassis Options and Accessories:**Auxiliary Winch: (AW-12)**

Optional worm gear winch, mounted behind front bumper, with a single lever control at the operator's console. Hydraulic powered to provide bare drum line pull of 10,000 lbs. at 40 ft. per minute. Winch drum is 3-1/2" dia. by 10" long. This winch includes 115 ft. of 7/16" wire rope, hook and four-way roller guide. The rope pull is 5,800 lbs. with a safety factor of 3.5:1. (Net Weight: 250 pounds)

Pintle Hook - Rear: (PH-8)

T-60-AOL Holland pintle hook mounted on rear frame member, rated for 24 tons.
(Net Weight: 15 pounds)

Pintle Hook - Front: (PH-17)

T-60-AOL Holland pintle hook mounted on front frame member, rated for 24 tons.
(Net Weight: 45 pounds)

Headlight and Taillight Grilles: (HTG-3)

Consists of welded steel protective grilles for headlights and taillights. Easily removable for replacing bulbs. (Net Weight: 40 pounds)

Rearview Mirrors: (RM-3)

One right-hand and one left-hand mirror, 6" wide x 16" high, mounted on deck stakes. Pivot out of way when contacted by obstacle at side of deck. (Net Weight: 12 pounds)

Operator Compartment:**Standard:**

Operator control station provides one-position access to all chassis and crane functions. Includes adjustable operator's seat, seat belt, 2-1/2 pound fire extinguisher and bubble level.

Operator Compartment Options and Accessories:**Operator Guard: (OG-11) (Not Available with Cab)**

Tubular steel weldment with heavy expanded steel mesh top section, bolts over the operator's compartment. (Net Weight: 60 pounds)

Operator Guard Cover: (OGC-3)

Clear vinyl cover goes over guard (OG-11) for inclement weather. Has zipper and velcro roll-up door. (Net Weight: 15 pounds)

Operator Guard Door: (OGD-2)

Hinged door covers operator compartment side opening. Has latch handle outside and knob inside. Rubber gasket contacts chassis. (Net Weight: 40 pounds)

All Weather Cab: (WC-36, 39)

Consists of rigid mounted canopy section and removable hinged door with safety glass. Rugged canopy structure with laminated glass front and top. Door is equipped with a key lock to protect operator's station. Includes defroster fan, dome light, 12,400 BTU heater with two-speed fan and 12V electric windshield wiper. There are sliding windows in the door and right-hand side. Also includes locking caps for fuel and hydraulic tanks. (Net Weight: 220 pounds)

Cab Heater Only: (CH-10, 11)

Provides 12,400 BTU heater with two-speed fan for units without All Weather Cab. (Net Weight: 12 pounds)

Windshield Washer: (WA-3)

Provides reservoir, pump and nozzle for windshield washer.

Floor Mat: (FM-7)

Vinyl mat with foam backing covers floor, front wall and lower portion of right hand wall of operator's compartment.

Operator's Suspension Seat: (SSO-2)

Provides additional operator comfort. (Net Weight: 15 pounds)

Noise Reduction Kit - Cab: (NR-4)

Includes vinyl floor mats and control valve cover and side panels of foam-backed, perforated vinyl for noise reduction. (Net Weight: 15 pounds)

Air Conditioning:

Complete system using R134a coolant has combination cooling and heating unit in cab. (Net Weight: 125 pounds)

Electrical System:**Standard 12 Volt DC:****Battery:**

Gas Units:	Group 27 with 540 CCA rating.
Diesel Units:	Group 31 with 950 CCA rating.

Back-Up Alarm:

Provides pulsating sound from a 97 dB alarm when ignition is on and transmission is in reverse.

Lighting Group:

Consists of two 12V lamps, with high and low beams for driving; tail, brake and turn signal lights and backup lights in rear; front turn signals; and emergency flasher switch at operator's station. 12V horn actuated by button located on shifting control.

Electrical System: (Cont'd)**Instrument Group:**

Located at operator's station and includes fuel gauge, ammeter, oil pressure, water temperature and transmission oil temperature gauges. Hourmeter records hours only during actual engine operation. Also included are warning lights for low transmission pressure, turn signals, high beams, hazard lights, parking brake and four-wheel drive.

Optional Electrical Accessories:**Outrigger Alarm System: (OW-6)**

112 dB alarm with alternating two-tone sound is actuated by a switch when the "outrigger down" controls are operated.

Strobe Lights: (SL-1)

Two yellow strobe lights, one on each side of turret weight box, for high visibility all around crane. Flashes 60-120 times per minute. Each strobe draws only one-half amp. Includes operator controlled switch.
(Net Weight: 5 pounds)

Amber Rotating Beacons: (ARB-3)

Amber rotating beacon mounted on each side of turret weight box. (Net Weight: 10 pounds)

Boom Work Lights: (WL-1)

Two halogen work lights, one on left side of boom to light boom tip, and one on right side of the turret to light ground under boom tip. Includes switch at operator's station. (Net Weight: 10 pounds)

Boom Worklights with Beacons: (WLB-1)

Two work lights, one on left side of boom to light boom tip, and one on right side of the turret to light ground under boom tip. Includes switch at operator's station. Amber rotating beacon mounted on each side of turret weight box. Also includes electrical slip rings. (Net Weight: 20 pounds)

Boom Worklights with Strobes: (WLS-1)

Two work lights, one on left side of boom to light boom tip, and one on right side of the turret to light ground under boom tip. Includes switch at operator's station. Two yellow strobe lights, one on each side of turret weight box, for high visibility all around crane. Flashes 60-120 times per minute. Each strobe draws only one-half amp. Also includes electrical slip rings.
(Net Weight: 15 pounds)

Hydraulic System:**Standard:**

Tandem pump, direct-driven by engine, delivers 29 GPM at 2,600 PSI and 34 GPM at 2,500 PSI at 2,500 RPM governed engine speed. System protected by relief valves, suction line strainer and 10 micron return line filter. 54 gallon reservoir equipped with breather and filler cap.

Boom Assembly:**Standard:**

Three-section, high strength steel construction, equipped with bearing pads for efficient support and extension. Double-acting hydraulic cylinders extend boom sections. The extension cylinder and the double-acting boom elevation cylinder are equipped with direct connected holding valves. Boom angle indicators on each side of boom.

Boom Rotation:**Standard:**

Heavy-duty bearing rotation gear with external teeth supports boom. Rotation is powered by hydraulic motor and worm gear drive. Rotation gearbox may be adjusted as wear occurs to minimize backlash. Boom is attached by high strength steel weldment.

Boom Hoist:**Standard:**

Turret-mounted planetary gear hoist, is hydraulically powered to provide a bare-drum line pull of 10,000 pounds at a speed of 100 feet per minute. Hoist drum 9-7/8 inch diameter by 16-1/2 inches long. The hoist includes 240 feet of 1/2 inch wire rope, 125 pound downhaul weight and swivel hook. Maximum allowable length of rope on the hoist is 315 feet.

Boom Attachments:**Standard:****Anti-Two-Block Device:**

Prevents damage to hoist rope and/or machine components from accidentally pulling sheave block or downhaul weight against boom tip. Consists of trip arm at boom tip which is moved upward by sheave block or downhaul weight as hook approaches boom tip. Trip arm actuates electric switch which is connected through cable reel mounted on turret to solenoid dump valve in the hydraulic circuit. This valve will dump the "hoist raise," "telescope extend" and "boom lower" circuits. No other circuits are affected. These circuits are returned to normal operation by operating the "hoist lower" or "telescope retract" control.

Four-Part-Line Sheave Block:

Double sheave block for four-part-line requirements. 10 inch O.D. sheaves for 1/2 inch diameter wire rope. Swivel hook with safety latch. 210 pound weight provides positive overhaul. Includes bar on top to actuate trip arm of Anti-Two-Block Device.

Optional Boom Attachments:**Boom Extension - 15 Ft.: (BE-32)**

Provides 15 feet of additional length for lifting loads with load line. Boom extension may be stowed alongside base boom section when not in use. Tip sheave, attaching brackets and pins included. Deduct 400 pounds from Capacity Chart when boom extension is in the stowed position. Includes trip arm for Anti-Two-Block Device. (Net Weight: 520 pounds)

Boom Extension - 15 Ft. Offset: (BE-33)

Same as BE-32 except has three settings: 0 degrees (in-line), 15 degrees offset and 30 degrees offset. (Net Weight: 670 pounds)

Boom Extension - 16 Ft. Offset: (BE-34)

Same as BE-33 except 16 ft. (Net Weight: 504 pounds)

Two-Part-Line Sheave Block: (SB-8)

Single sheave block for two-part-line requirements. Block is shorter than normal, 21-1/2" from top to saddle of load hook. 10" O.D. sheave for 9/16" and 1/2" rope. Swivel hook with safety latch. Includes bar on top to actuate trip arm of Anti-Two-Block Device. (Net Weight: 124 pounds)

Searcher Hook: (Nose Mount) (SH-6)

5,000 pound capacity hook bracket is attached to the front of the boom tip with four pins through the boom extension attachment lugs. A swivel hook with latch is pinned to the tip of the bracket. (Net Weight: 95 pounds)

Searcher Hook, Link Under Tip: (SH-7, 8)

5,000 pound capacity swivel hook with spring latch is attached to lug under boom tip and two pins. (Net Weight: 15 pounds)

Load Moment Indicator: (LMI)

Warns operator of impending overload with audible and visual signals. Prevents overload by stopping boom functions that cause overload. Readouts for load, boom angle, boom length and load radius. Includes sensors and special electrical slip rings. (Net Weight: 50 pounds)

Load Indicator: (LI)

Three-sheave load sensor on top of boom. Special electrical collector rings in turntable. Readout box on top of instrument panel shows load for 1-part, 2-part and 4-part lines. (Net Weight: 50 pounds)

Should you, as the end user, require an option or special equipment on your IC-200-E that is not listed on our sales literature, please contact your dealer salesperson or the factory to receive a special quoted price.

***** Specifications subject to change without notice *****

IC-200-1E

CAPACITIES APPLY TO OPERATION ON FIRM LEVEL SURFACE								
LOAD RADIUS FEET	MAIN BOOM OR EXTENSION CAPACITIES IN POUNDS							
	360° ROTATION			OVER FRONT				
	ON RUBBER	ON OUTRIGGERS		ON RUBBER	ON OUTRIGGERS			
MAIN BOOM	6	16200	30000		17000		30000	
	8	13200	24000		13800		24000	
	10	11000	19800		11500		19800	
	12	8100	16100		9600		16100	
	14	6250	13500		7900		13500	
	16	5000	11200		6300		11200	
	18	4100	10000		5100		10000	
	20	3400	8800		4300		8800	
	22	2850	7700		3600		7800	
	24	2400	6600		3000		6900	
	26	2100	5750		2600		6200	
	28	1850	5150		2300		5700	
	30	1650	4650		2100		5300	
	32	1450	4200		1850		4900	
	36	1150	3400		1500		4200	
15' BOOM EXT.	40	900	3050		1200		3600	
	44	650	2600		950		3100	
	48	450	2200		750		2700	
	51	250	1900		600		2400	
	BOOM EXTENSION	15-FOOT BOOM EXTENSION - STRAIGHT OR OFFSET						
		MAIN BOOM ANGLE						
	ANGLE	0°	15°	30°	40°	50°	60°	70°
	0°	---	3100	3450	3900	4650	6000	7500
15°	---	3000	3100	3300	3650	4250	5200	
30°	---	---	3000	3050	3200	3450	3900	

CAUTION BOOM EXTENSION LOADS MUST NOT EXCEED MAIN BOOM CAPACITY.
BOOM EXTENSION MAY ONLY CARRY LOADS WITH OUTRIGGERS DOWN.

BOOM EXTENSION DEDUCT: 400 POUNDS WHEN STOWED ON BASE BOOM.
800 POUNDS IN WORK POSITION WITH LOAD ON MAIN BOOM.

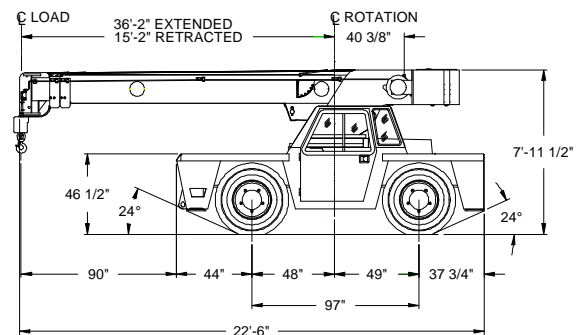
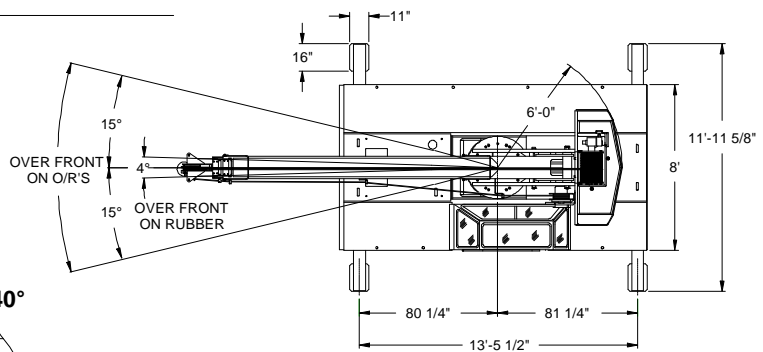
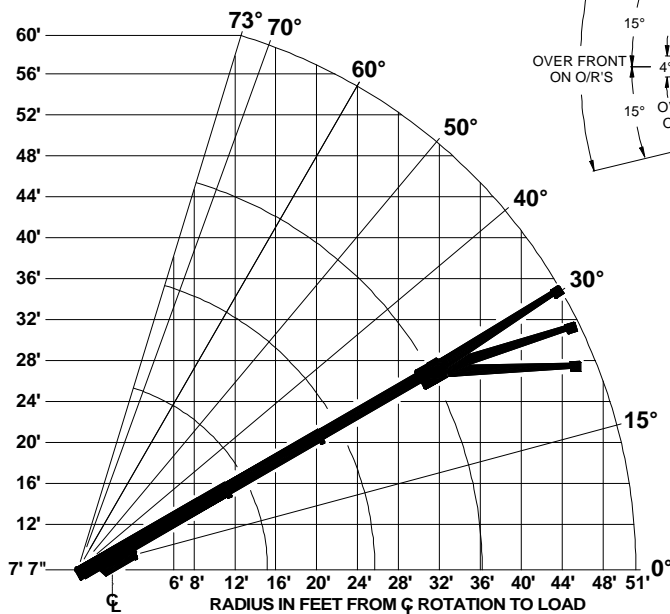
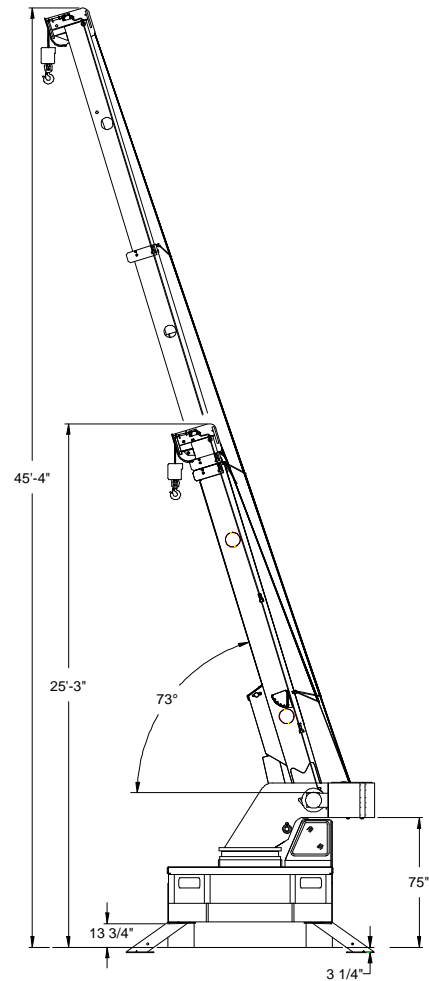
USE SINGLE PART
LOAD LINE FOR
LOADS TO 7500
LBS. (WT. 125 LBS.)



USE TWO PART
LOAD LINE FOR
LOADS TO 15000
LBS. (WT. 124 LBS.)



USE FOUR PART
LOAD LINE FOR
LOADS TO 30000
LBS. (WT. 210 LBS.)

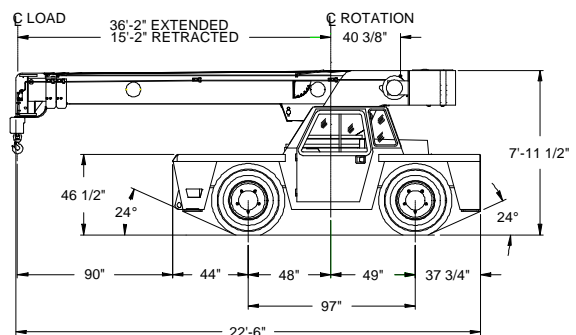
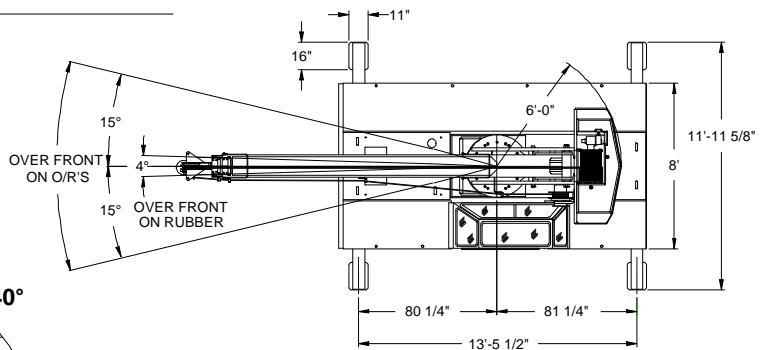
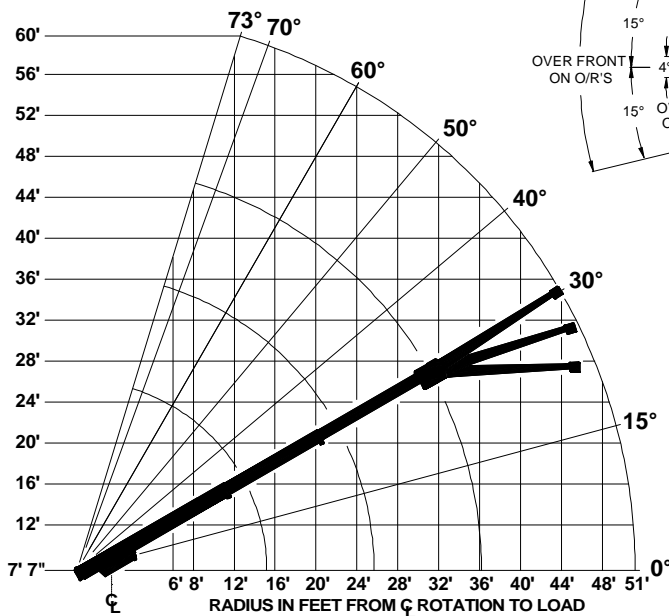
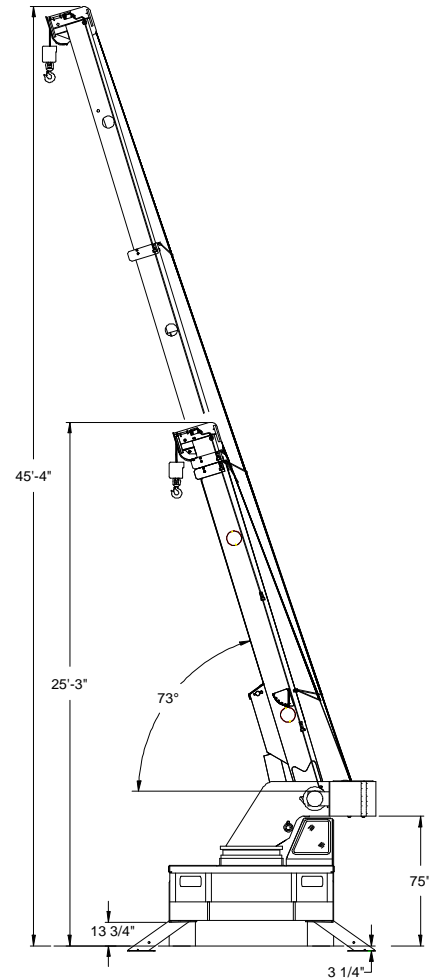
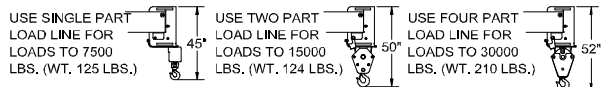


IC-200-2E

CAPACITIES APPLY TO OPERATION ON FIRM LEVEL SURFACE								
LOAD RADIUS FEET	MAIN BOOM OR EXTENSION CAPACITIES IN POUNDS							
	360° ROTATION			OVER FRONT				
	ON RUBBER		ON OUTRIGGERS	ON RUBBER		ON OUTRIGGERS		
MAIN BOOM	6	16200	30000	17000	30000			
	8	13200	24000	13800	24000			
	10	11000	19800	11500	19800			
	12	8100	16100	9600	16100			
	14	6250	13500	7900	13500			
	16	5000	11200	6300	11200			
	18	4100	10000	5100	10000			
	20	3400	8800	4300	8800			
	22	2850	7700	3600	7800			
	24	2400	6600	3000	6900			
	26	2100	5750	2600	6200			
	28	1850	5150	2300	5700			
	30	1650	4650	2100	5300			
	32	1450	4200	1850	4900			
	36	1150	3400	1500	4200			
15' BOOM EXT.	40	900	3050	1200	3600			
	44	650	2600	950	3100			
	48	450	2200	750	2700			
	51	250	1900	600	2400			
	BOOM EXTENSION	15-FOOT BOOM EXTENSION - STRAIGHT OR OFFSET						
	ANGLE	MAIN BOOM ANGLE						
	0°	0°	15°	30°	40°	50°	60°	70°
	0°	---	3100	3450	3900	4650	6000	7500
	15°	---	3000	3100	3300	3650	4250	5200
	30°	---	---	3000	3050	3200	3450	3900

CAUTION BOOM EXTENSION LOADS MUST NOT EXCEED MAIN BOOM CAPACITY.
BOOM EXTENSION MAY ONLY CARRY LOADS WITH OUTRIGGERS DOWN.

BOOM EXTENSION DEDUCT: 400 POUNDS WHEN STOWED ON BASE BOOM.
800 POUNDS IN WORK POSITION WITH LOAD ON MAIN BOOM.



IC-200-3E

LOAD RADIUS FEET	CAPACITIES IN POUNDS FOR OPERATION ON FIRM LEVEL SURFACE							
	MAIN BOOM ONLY				BOOM EXTENSION			
	ON RUBBER	ON HOUSING	ON OUTRIGGERS	ON HOUSING	ON RUBBER	ON HOUSING	ON OUTRIGGERS	ON HOUSING
8	18000	18000	30000	30000	---	---	---	---
10	12500	12500	22400	22400	---	---	---	---
12	10000	10000	18500	18500	7500	7500	7500	7500
14	8040	8170	15700	15700	7500	7500	7500	7500
16	6800	6730	13500	13500	7500	7500	7500	7500
18	5830	5700	11800	11800	6140	7500	7500	7500
20	4450	4280	9500	9500	5010	6440	7500	7500
22	3720	3580	8550	8550	4200	5430	7500	7500
24	3140	3070	7700	7700	3580	4660	6850	6850
26	2680	2640	6980	6980	3080	4030	6250	6250
28	2300	2260	6300	6300	2660	3530	5750	5750
30	1980	1930	5550	5550	2290	3100	5300	5300
32	1700	1640	4800	4800	1990	2710	4820	4820
34	1470	1410	4110	4110	1730	2400	4380	4380
36	1280	1220	3480	3480	1510	2130	4270	4270
38	1100	1040	2930	2930	1340	1880	3830	3830
40	940	890	2460	2460	1180	1640	3340	3340
42	800	750	2110	2110	1040	1440	2980	2980
44	680	630	1810	1810	900	1260	2630	2630
46	580	530	1560	1560	780	1100	2300	2300
48	500	450	1360	1360	680	960	2040	2040
50	430	380	1180	1180	600	840	1810	1810
52	370	320	1030	1030	530	740	1610	1610
54	310	260	890	890	470	650	1430	1430
56	260	210	770	770	420	570	1280	1280
58	210	160	660	660	370	500	1150	1150
60	170	120	560	560	330	440	1030	1030
62	130	80	470	470	290	390	920	920
64	100	50	390	390	250	350	820	820
66	70	30	320	320	210	310	730	730
68	50	10	260	260	180	270	650	650
70	30	---	210	210	150	240	580	580
72	10	---	170	170	120	210	520	520
74	---	---	140	140	100	180	470	470
76	---	---	110	110	80	150	430	430
78	---	---	90	90	60	120	390	390
80	---	---	70	70	40	100	360	360
82	---	---	50	50	30	80	330	330
84	---	---	40	40	20	60	300	300
86	---	---	30	30	10	40	270	270
88	---	---	20	20	---	---	240	240
90	---	---	10	10	---	---	210	210
92	---	---	---	---	---	---	180	180
94	---	---	---	---	---	---	150	150
96	---	---	---	---	---	---	120	120
98	---	---	---	---	---	---	90	90
100	---	---	---	---	---	---	60	60

CAUTION: BOOM EXTENSION LOADS MUST NOT EXCEED MAIN BOOM CAPACITY.

BOOM EXTENSION DEDUCT: 400 POUNDS WHEN STOWED ON BASE BOOM.
500 POUNDS IN WORK POSITION WITH LOAD ON MAIN BOOM.

USE BRIDGE PAIL
LOAD LINE FOR
LOADS TO 7400
LBS. (WT. 120 LBS.)

USE 1-1/2" PAIL
LOAD LINE FOR
LOADS TO 14000
LBS. (WT. 120 LBS.)

USE 2" PAIL
LOAD LINE FOR
LOADS TO 18000
LBS. (WT. 210 LBS.)

