

TECH
SPEC

IC-20



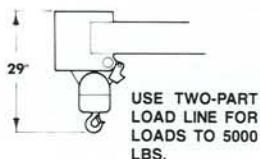
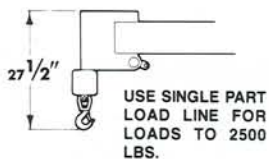
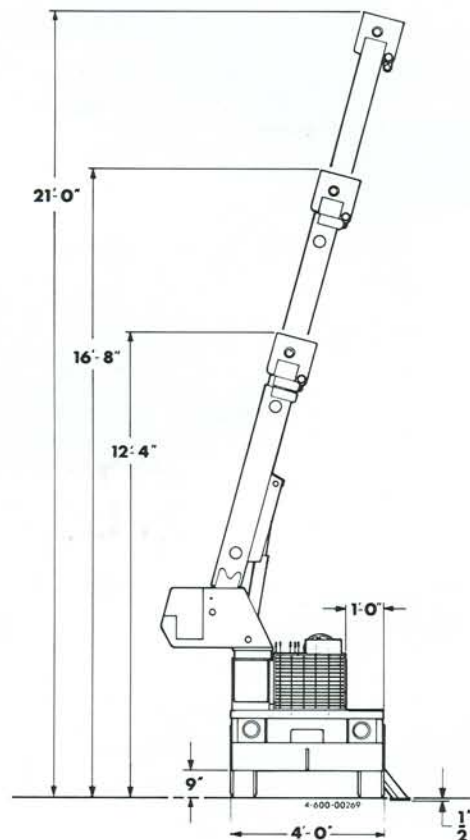
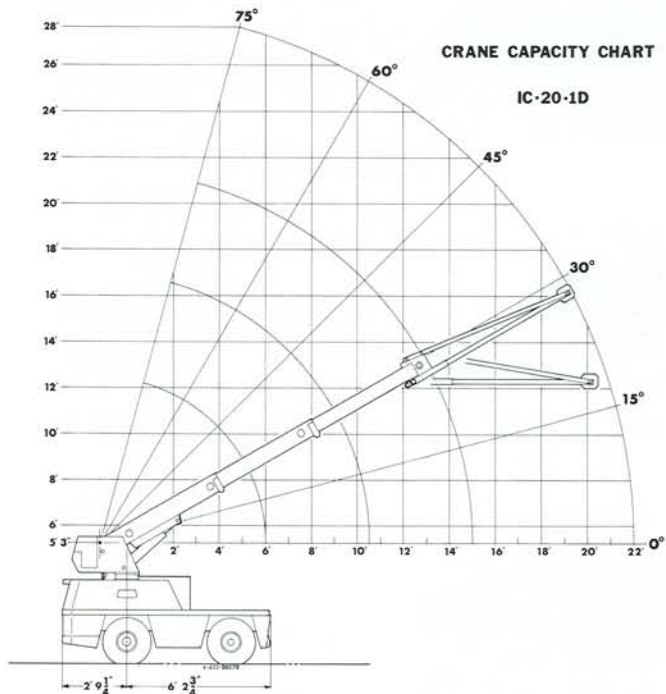
AT A GLANCE:

Built tough to work tough in industrial applications where an operator wants pinpoint control and placement of loads to 2 1/2 tons.

bmc BRODERSON
Manufacturing Corp.

P.O. Box 14770, Lenexa, Kansas 66215
(913) 888-0606 • FAX (913) 541-0690

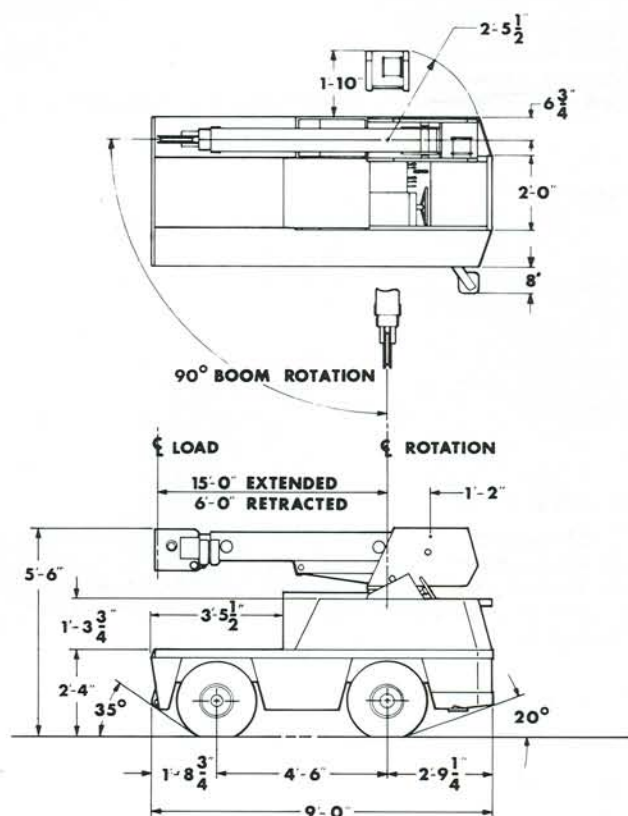
IC-20

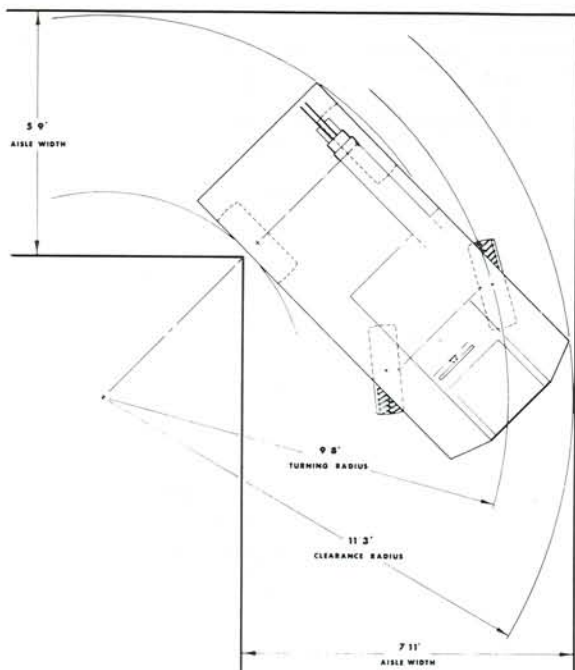


LOAD RADIUS FEET	3-SECTION BOOM		7FT. JIB INSTALLED		
	CENTERED OVER FRONT	FOR 90° SWING		90° SWING (IN LINE OR OFFSET)	
		ON RUBBER	ON OUTRIGGER	ON RUBBER	ON OUTRIGGER
4	5000	5000	5000	1300	1300
5	4000	4000	4000	1100	1100
6	3000	2625	3000	750	750
8	2500	1550	2425	650	650
10	1950	1550	1500	550	550
12	1675	1050	1075	500	500
15	1200	750	750	500	500
17		500		425	500
19				325	500
22				225	350

Capacities on outrigger are 85% of tipping loads. Capacities on rubber are 75% of tipping loads.

Capacities below BOLD line are limited by tipping. Other capacities are limited by structural or hydraulic capability.





GENERAL:

Weight—5,850 lbs.
Travel Speed—0 to 5 MPH
Drawbar pull—2,800 lbs.
Turning Radius—(C/L of outside steering wheel) 9'8" aisle width for 90° turn 7'11"

Engine:

	Standard	Optional
Make	Ford	Perkins
Model	VSG413I	104.19-IDI
Type	Gas	Diesel
No. Cylinders	4	4
Displacement	79	122
HP @ governed speed	34 hp	39 hp

Electrical:

12 volt system
Lighting group—1 pair headlights
Instrument group—Fuel ammeter, oil pressure, water temperature, hydrostatic loop oil temperature gauges and hourmeter.

Fuel Tank:

—13.5 gallon capacity

Hydrostatic Pump:

—Sundstrand piston type 2.8 CID/Rev direct driven from engine crankshaft.

Axles:

Drive axle—Location - Front
 Contains Fairfield Torque hubs and Ross Hydraulic drive motors. Axle oscillates a total of 1 1/2"
Steering axle—Location - Rear

Steering:

—Full hydraulic orbitrol unit with one double-acting 2 1/2" cylinder attached to rear axle.

Tires:

Standard—7.50x10 pneumatic 12-ply front, 16-ply rear
Optional—Solid rubber "Grizzley Supersoft" SG 36

Brakes:

—Foot actuated disc brake built into each torque hub to hold crane chassis when not being driven.

Outrigger:

—One hydraulic outrigger with box beam construction. Hydraulic cylinder is equipped with direct-connected hold-in valve.

Cargo Deck:

—20 sq.ft deck area, 5,000 pounds capacity.

Hydraulic System:

—Tandem pump mounted to rear of hydrostatic piston pump. Delivers 5 and 15 GPM at rated R.P.M.
 Hydraulic oil tank capacity — 9.5 gallon capacity

Crane:

Boom Movement

Rotation	90°
Elevation	0° to 75°
Extension	6' to 15' (9ft.)

Boom Speed

Rotation	90° in 13 seconds
Elevation	11 seconds
Extension	28 seconds

Boom Assembly

Three section boom assembly equipped with bearing pads, double-acting hydraulic cylinders equipped with direct connected holding valves and boom angle indicator on left side of boom.

Boom Swing

Two double acting hydraulic cylinders connected to turntable torque tube provides 90° rotation. Heavy-duty ball bearing rotation bearing.

Boom Winch

Turret-mounted
 Hydraulic powered
 Bare drum line pull of 3,100 lbs.
 Winch line speed 46 ft. per minute
 80 ft. of 5/16 wire rope, downhaul weight and swivel hook, standard

Anti-Two Block Device

Prevents damage to hoist rope and/or machine components

IC-20

Options:

Engine:

LP Gas System Kit (2).

Contains all necessary components for LP gas operation.

Dual Fuel System Kit (3).

Contains all necessary components to burn LPG or gasoline.

Diesel Engine (4).

Perkins 104.19-IDI

Spark-Arrester Muffler (5).

Installed in addition to standard muffler.

Engine Shutdown Gauges (6).

Shuts engine off when high water temperature or low engine oil pressure occurs.

Tires:

Solid Rubber Tires: (7).

For applications where hazardous ground conditions exist.

Chassis:

Auxiliary Winch (8).

Mounted behind front bumper, hydraulically driven with control in operators console.

Pintle Hook (9).

Holland "T-60-A" Pintle Hook mounted on rear frame. 5 ton capacity.

Lifting Sling Kit (10, 11, 12)

Three leg hitch, consisting of heavy-duty pear link, 3 wire ropes with swaged on clevis ends. Two flush mounted lifting rings on load deck corners and heavy-duty lift eye attached to turret.

Operator Compartment:

Operator Guard (13).

Tubular steel weldment with heavy expanded steel mesh top section. Overhead height with guard installed 90".

Floor Mat (14).

Vinyl mat with foam backing.

Electrical:

Tail Light (15).

Tail light mounted in protective bracket welded to left rear panel on chassis.

Lighted Instrument Gauges (16).

Instrument gauges equipped with lights for night operations.

Strobe Light (17).

Yellow strobe light mounted to operator guard.

Boom Work Lights (18).

One work light mounted to boom to light boom tip and one work light mounted to turret to light ground under boom tip.

Back-up Alarm (19).

Provides pulsating sound when transmission is in reverse.

Boom Attachments:

Boom Swing Lock (20).

Prevents boom from being swung in normal 90° arc. Includes padlock.

7 Ft. Jib (21).

Consists of jib with pair of tension bars, tip sheave, cable keeper, pins, jib attaching pins. Tension bars provide two positions: In-line and 30° offset.

Sheave Block (22).

Required for maximum capacity lifts.

Fiberglass Bucket (23).

24"x24"x42" deep personnel bucket with maximum capacity of 300 pounds.

Bucket Brake (24).

Friction brake for holding fiberglass bucket in a fixed position.



BMC BRODERSON
Manufacturing Corp.