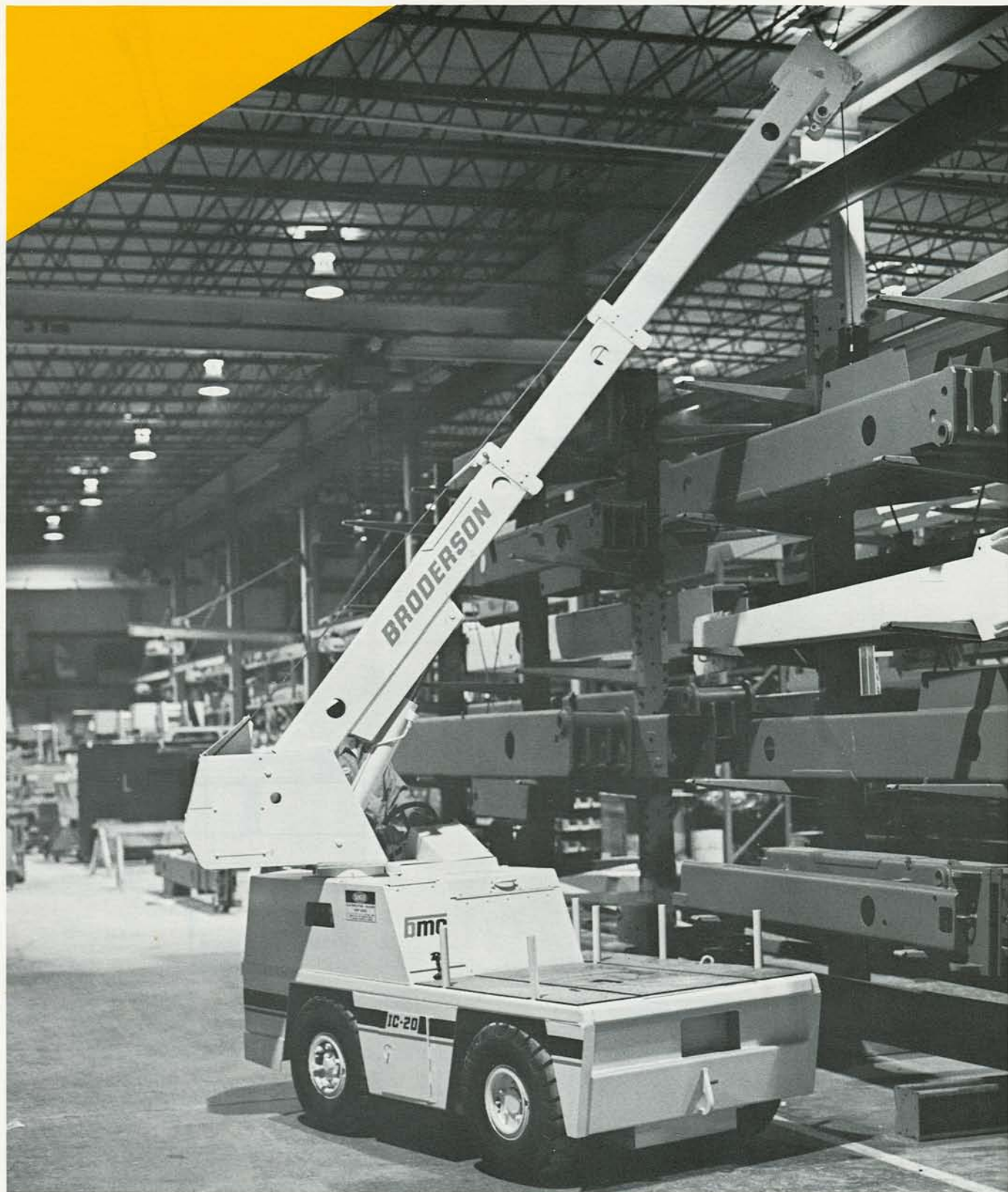


**TECH
SPEC**

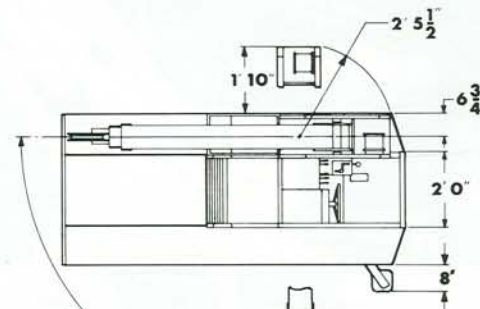
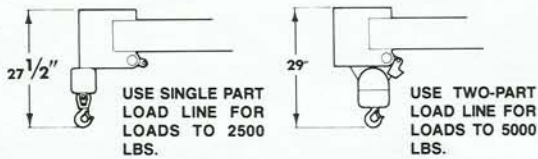
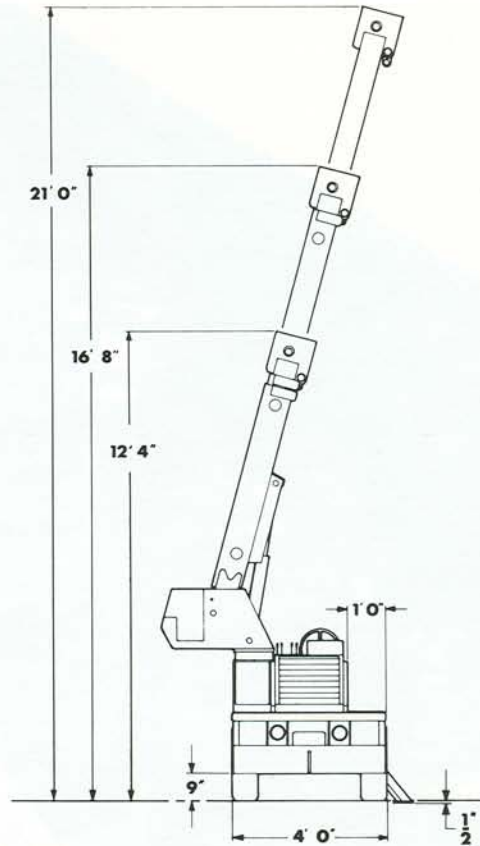
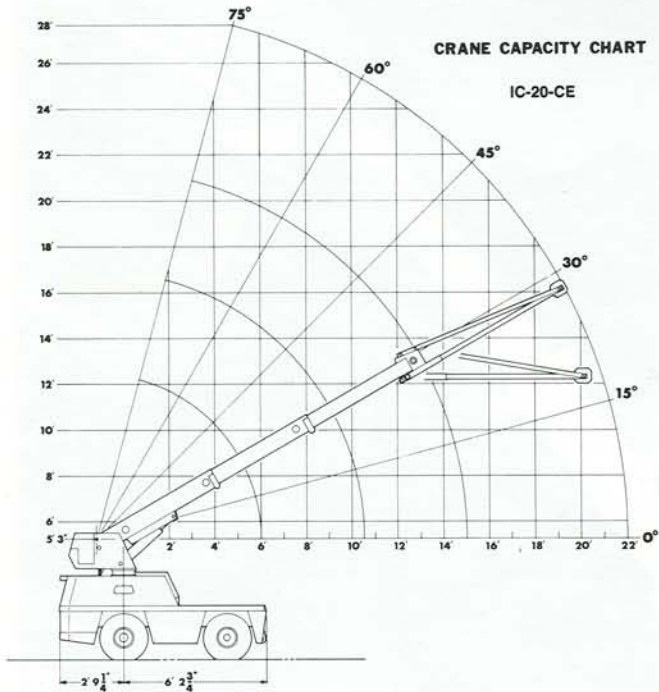
IC-20-CE ⚡



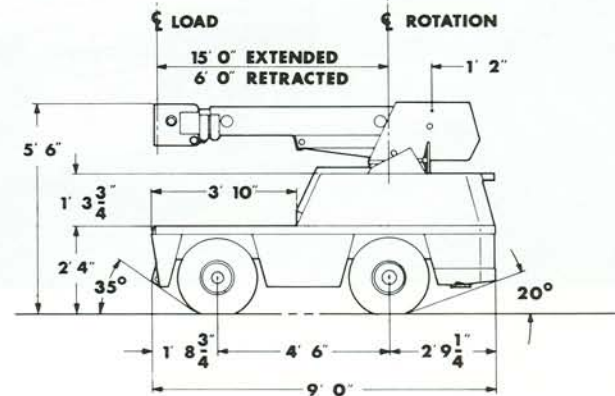
bmc BRODERSON
Manufacturing Corp.

P.O. Box 14770, Lenexa, Kansas 66215
(913) 888-0606 • FAX (913) 541-0690

IC-20-CE ⚡



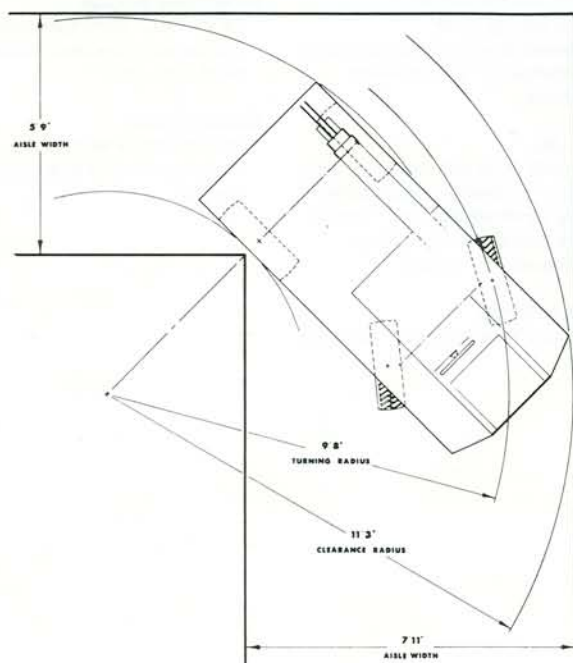
90° BOOM ROTATION



LOAD RADIUS FEET	3-SECTION BOOM		7 FT. JIB INSTALLED		
	CENTERED OVER FRONT	FOR 90° SWING ON RUBBER	ON OUTRIGGER	90° SWING (IN LINE OR OFFSET) ON RUBBER	ON OUTRIGGER
4	5000	5000	5000	1300	1300
5	4000	4000	4000	1100	1100
6	3000	2625	3000	750	750
8	2500	1550	2425	650	650
10	1950	1025	1500	550	550
12	1675	750	1075	500	500
15	1200	500	750	500	500
17				425	500
19				325	500
22				225	350

CAPACITIES ON OUTRIGGER ARE 85% OF TIPPING LOADS. CAPACITIES ON RUBBER ARE 75% OF TIPPING LOADS.

CAPACITIES BELOW **BOLD** LINE ARE LIMITED BY TIPPING. OTHER CAPACITIES ARE LIMITED BY STRUCTURAL OR HYDRAULIC CAPABILITY.



General:

Weight 6,300 lbs.
Travel Speed 0 to 3 mph
Drawbar pull 3,000 lbs.
Turning radius 9' 8" Aisle width for 90° turn 7' 11" (C/L of outside steering wheel)

Motors:

Drive powered by 48VDC electric motor with SCR control.
 Hydraulic pump powered by 48VDC electric motor

Electrical:

48 volt — Drives
 24 — Volt Controls
 Instrument group — Ammeter, voltmeter, battery meter, hourmeter, hydraulic pressure gage

Batteries:

Two 24 volt, 170 amp-hour, accessible under hinged deck covers
 On-board 40 volt charger

Axles:

Drive axle — Location - Front
 Contains Fairfield torque hubs
Steering axle — Location - Rear

Steering:

Full hydraulic steering unit with one double-acting cylinder attached to rear axle

Tires:

Standard — 7.50x10 Pneumatic, 12-ply front, 16-ply rear
Optional — foam-filled tires

Brakes:

Foot-actuated disc brake built into each torque to slow crane chassis on slopes
 Spring-actuated, hydraulically-released, automatic brake

Outrigger:

One hydraulic outrigger with box beam construction. Hydraulic cylinder is equipped with direct-connected holding valve
 Pulsating alarm sounds when operating control

Cargo Deck:

20 sq. ft. deck area, 5,000 pounds capacity

Hydraulic System:

Gear pump driven by separate 48 v motor.
 Delivers 6 gpm at 500 PSI
 Hydraulic oil tank capacity — 9.5 gal. capacity

Backup Alarm:

Pulsating alarm sounds when foot switch is engaged and speed control is in reverse.

Crane:

Boom Movement

Rotation 90°
 Elevation 0° to 75°
 Extension 6' to 15' (9ft.)

Boom Speed

Rotation 90° in 12 seconds
 Elevation 9 seconds
 Extension 22 seconds

Boom Assembly

Three section boom assembly equipped with bearing pads, double-acting hydraulic cylinders equipped with direct connected holding valves and boom angle indicator on left side of boom

Boom Swing

Two double acting hydraulic cylinders connected to turnable torque tube provides 90° rotation. Heavy-duty ball bearing rotation bearing.

Boom Winch

Turret-mounted
 Hydraulic powered
 Bare drum line pull of 3,500 lbs.
 Winch line speed 26 ft. per minute
 80 ft. of 5/16 wire rope, downhaul weight and swivel hook, standard

Anti-two Block device

Prevents damage to hoist rope and/or machine components

IC-20-CE ⚡

Options:

Steering:

Steering Knob

Spinner knob attaches to steering wheel for easier maneuvering.

Tires:

Foam-filled

Solid Rubber Tires:

For applications where hazardous ground conditions exist.

Chassis:

Pintle Hook

Holland "T-60-A" Pintle Hook mounted on rear frame. 5 ton capacity.

Lifting Sling Kit

Three leg hitch, consisting of heavy-duty pear link, 3 wire ropes with swaged on clevis ends. Two flush mounted lifting rings on load deck corners and heavy-duty lift eye attached to turret.

Operator Compartment:

Operator Guard

Tubular steel weldment with heavy expanded steel mesh top section. Overhead height with guard installed 90".

Boom Attachments:

Boom Swing Lock

Prevents boom from being swung in normal 90° arc. Includes padlock.

7 Ft. Jib

Consist of jib with pair of tension bars, tip sheave, cable keeper, pins, jib attaching pins. Tension bars provide two positions: In-line and 30° offset.

Sheave Block

Required for maximum capacity lifts.

Fiberglass Bucket

24"x24"x42" deep personnel bucket with maximum capacity of 300 pounds.

Bucket Brake

Friction brake for holding fiberglass bucket in a fixed position.



bmc BRODERSON
Manufacturing Corp.

P.O. Box 14770, Lenexa, Kansas 66215
(913) 888-0606 • FAX (913) 541-0690