

# IC-200-2SJ

## Carry-Deck Industrial Crane

The IC-200-2SJ is a self-propelled Industrial crane specifically designed for use on Shipboards. All needed operations as well as maintenance and drydock activities. It includes a 3-section proportional hydraulically extended boom.

### **Capacity**

30,000 lbs. (13,600 kg)

### **Sheave Height**

45' 4"

### **Horizontal Reach**

36'

### **Height**

8' (2.44 m)

### **Width**

7' 10.5" (2.4 m)

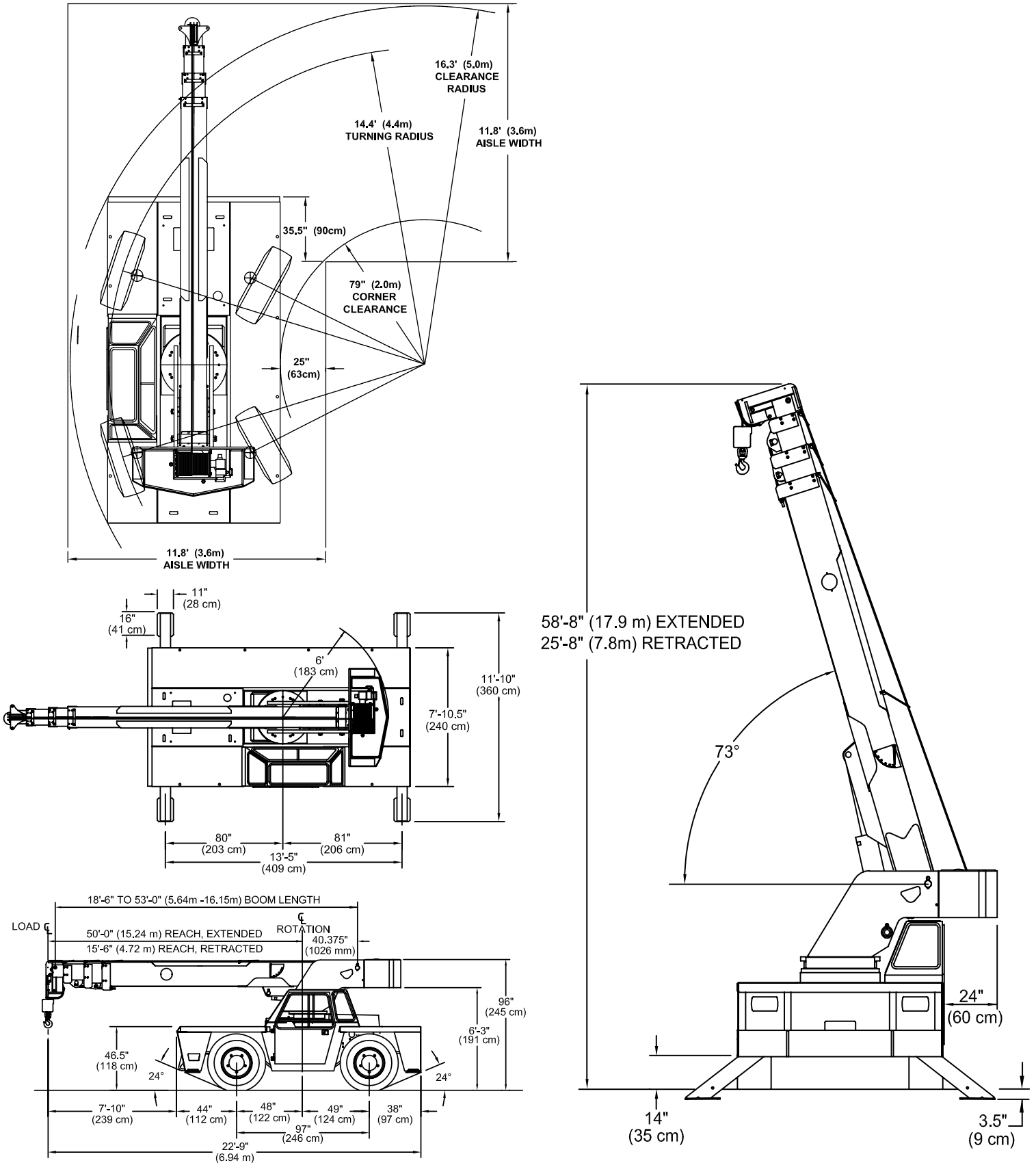


**bmc<sup>®</sup> BRODERSON<sup>®</sup>**  
Manufacturing Corp.

[www.broderick.com](http://www.broderick.com)

# IC-200-2SJ

## DIMENSIONS



# IC-200-2SJ

## SPECIFICATIONS



### GENERAL

	ROTATION	ELEVATION	EXTENSION
<b>Boom Movement</b>	Continuous	0° to 73°	34'6" (10.5m)
<b>Boom Speeds</b>	1.8 RPM	20 sec.	50 sec.

<b>Weight Total</b>	29,310 lbs.
<b>Gradeability</b>	54% (28°)
<b>Turning Radius</b>	14' 4"

### ENGINE

<b>Make</b>	CUMMINS
<b>Model</b>	QSB3.3L
<b>Type</b>	Diesel, Jet Fuel
<b>Cylinder</b>	4
<b>Displacement</b>	3.3L
<b>HP @ Gov. Speed</b>	99HP

### TRANSMISSION

**POWERSHIFT TRANSMISSION** with 4-speeds forward and reverse. Provides powershifts at any engine speed in any gear. All shifting is done with a single lever electrical control mounted on the steering column. Equipped with torque convertor and transmission oil cooler. Torque convertor has stall ratio of 2.2:1.

**GEAR RATIO:**  
First - 5.72:1, Second - 3.23:1, Third - 1.77:1, Fourth - 1.00:1

### FRONT

Planetary drive/steer front axle with 15.78 to 1.0 ratio. Differential equipped with "limited slip" feature. Front axle mounted rigidly to frame.

TRANS. GEAR	SPEED	DRAWBAR PULL*
First	3 MPH	17,000*
Second	5 MPH	8,900*
Third	10 MPH	5,100*
Fourth	18 MPH	2,700*

\*Drawbar pull is calculated for GM 4.3L engine.

### AXLES

#### REAR

**Standard (2-Wheel Drive):**  
Steering axle with 1-1/2 degree oscillation in either direction.  
**Optional (4-Wheel Drive):**  
Planetary drive/steer axle with 24.98 to 1.0 ratio. Differential is not "limited slip" in rear axle. 1-1/2 degree oscillation in either direction. Axle ratio compatible with 4-wheel drive transmission output for front axle match. Transmission equipped with electrohydraulic control for shifting between 2-wheel drive and 4-wheel drive.

### STEERING

Full hydraulic steering unit with two 3-inch (7.6 cm) cylinders attached to each axle. Allows limited steering when engine is not running. A switch on the control panel is used to select rearwheel steering, four-wheel steering or crab steering. Electronic sensors and control box automatically align the steering when a new mode is selected.

### BRAKES

**Service:** Split-system, 4-wheel hydraulic-boosted multiple plate wet disc brakes.  
**Parking:** Hand lever actuated disc-type parking brake on transmission.

### TIRES

15x22.5, 16-ply rating.

### OPERATOR COMPARTMENT

Provides one-position access to all chassis & crane functions. Includes adjustable operator's seat, retracting seat belts, fire extinguisher & bubble level.

### CHASSIS

#### CARGO DECK

66 square feet (6 m<sup>2</sup>) of deck area. 17,000 lbs (7,700 kg) capacity on deck when load is centered over or between axles. Steps located on front corners.

#### LIFTING RINGS

Lifting rings at each corner of cargo deck so sling can be attached for lifting crane.

#### OUTRIGGERS

Four hydraulic outriggers of box beam construction with direct connected holding valves. Independent controls for each outrigger. Outrigger pad dimension: 11" x 16" (28cm x 41cm).

#### HEADLIGHT & TAILLIGHT GRILLES

Welded steel protective grilles for headlights and taillights.

Includes different colored lens

#### ACCESSORY STORAGE BOX

Storage box is 14" (35cm) deep x 10-1/2" (26cm) long x 36-1/2" (93cm) wide, located in front cargo deck.

#### LIGHTING PACKAGE

One pair headlights with high and low beams, tail, brake and turn signal lights and back-up lights in rear, front turn signals and emergency flasher switch at operator's station.

#### DISPLAY

Fuel gauge and hourmeter records hours only during actual engine operations. Also includes warning lights for low oil and transmission pressure, check engine, high coolant and transmission temperature, turn signals, high beams, hazard lights, parking brake and four-wheel drive.

#### BACK-UP ALARM

Provides pulsating sound when transmission is in reverse.

#### OUTRIGGER ALARM SYSTEM

Two-tone alarm is activated when "outrigger down" controls are operated.

### ELECTRICAL (12-VOLT SYSTEM)

### HYDRAULIC

**TANDEM PUMP** direct-driven by engine crankshaft, rated at 29 GPM (110 L/min) and 34 GPM (129 L/min) at rated RPM. Hydraulic oil tank capacity of 54 gallons (204 L).

#### THREE-SECTION BOOM ASSEMBLY

equipped with bearing pads, double-acting hydraulic cylinders with direct-connected holding valves and boom angle indicator on each side of boom.

#### BOOM ROTATION

Heavy-duty ball bearing rotation gear with external teeth. Rotation is powered by hydraulic motor and worm gear drive.

#### BOOM HOIST

Turret mounted planetary gear hoist hydraulically powered with a bare drum line pull of 10,000 lbs. (4536 kg) at a line speed of 100 FPM (30 m/min). Includes downhaul weight, swivel hook and sheave block for 4-part line.

#### ANTI-TWO-BLOCK DEVICE

Prevents damage to hoist rope and/or crane components from pulling load hook against tip.

#### SHEAVE BLOCK, FOUR PART LINE

Double sheave block for 4-part line requirements.

#### RATED CAPACITY LIMITER

Warns operator of impending overload with audible & visual signals. Prevents overload by stopping boom functions that cause overloads.

#### DRUM ROTATION INDICATOR

Tactile feedback to operator when drum is rotating.



## Main Features

**RATED CAPACITY LIMITER**  
Standard

**CAPACITY ON OUTRIGGERS**  
30,000 lbs. (13,600 kg)

**PICK AND CARRY CAPACITY**  
up to 17,000 lbs. (7,711 kg)

**HEIGHT**  
8' (2.45 m)

**WIDTH**  
7' 10.5" (2.4 m)

**BOOM ROTATION**  
360° Continuous

**SHEAVE HEIGHT**  
45' 4"

**HORIZONTAL REACH**  
36'

**FOUR-WHEEL STEER**  
Standard

**FOUR-WHEEL DRIVE**  
Optional

**POWERSHIFT TRANSMISSION**  
Standard

**FULLY HYDRAULIC CONTROLS FOR  
SMOOTH, PRECISE OPERATIONS**

**INDEPENDENT OUTRIGGER  
CONTROLS**

**DIESEL OR JET FUEL ENGINE**

## EXTENSIVE TESTING:

MtIL-S-901  
Mil-PRF-2104  
MIL-DTL-5624  
MIL-DTL-83133  
MIL-DTL-16884  
MIL-PRF-17672  
MIL-STD-461  
MIL-STD-464  
MIL-STD-810  
NAVPAC P-307  
MIL-STD-209  
Reliability / Endurance  
testing  
Emergency stopping /  
Parking brake:  
NAVSUP approved

## AXLE & STEERING

4-Wheel Steer & 2-Wheel Drive

## Tire

Non-Marking Tires

## Chassis

Tire Downs

## Bridle

Front

## Rearview Mirrors

One mounted on right-hand deck stake and  
one mounted on left-hand deck stake.

## OPERATOR COMPARTMENT

### All Weather Cab

Rigid-mounted canopy section and  
removable hinged door. Includes heater,  
electric windshield wiper, one sliding glass  
window in the door, & one in the right side  
of the canopy. Defroster fan & dome light  
included.

## Additional Features

### Strobe Lights

Yellow strobe light mounted on each side of  
turret weight box.

### Boom Work Lights

One work light mounted to boom to light  
boom tip and one work light mounted to  
turret to light ground under boom tip.

### Work Lights - Rear

Two work lights recessed in rear bumper'

### RCL Light Bar

3 color light bar for external indication of  
load status

### Colored Lens

Headlight and worklight colored lens -  
stored in operator compartment.

### Heating Package

Battery, oil heater, fuel heater, block heater,  
and oil pan heater.

**CONSULT THE IC-200-S5J ENGINEERING SPEC FOR ADDITIONAL INFORMATION.S5**

**Broderson Cranes are manufactured to ISO 9001:2015 certified standards and have a market leading reputation for quality and reliability. Broderson Cranes are engineered for operating efficiency and are easy to operate and maintain.**

**An extensive network of full-service dealers offer parts and service support by factory-trained technicians.**

For additional options or special equipment not listed, please consult your dealer salesperson or contact **Broderson Manufacturing Corp.**

**BRODERSON®**  
**Manufacturing Corp.**

14741 West 106th Street  
Lenexa, KS 66215 USA

**(913) 888-0606**  
**www.Broderson.com**

Dimensions and  
values shown are for  
reference purposes only.  
Specifications subject to  
change.



BMC\_ptsFkdL8\_0123