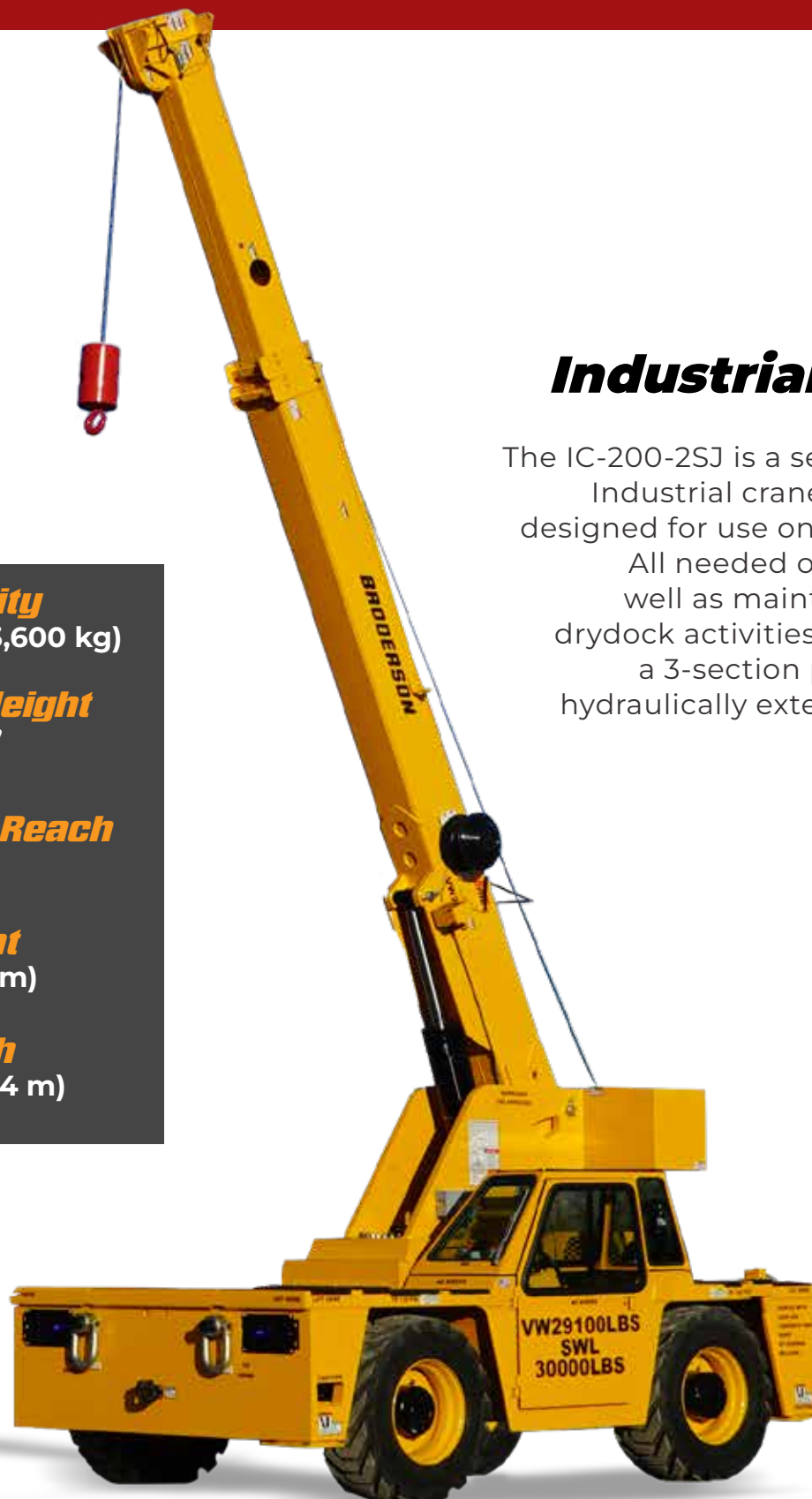


IC-200-2SJ 4x4



Industrial Crane

The IC-200-2SJ is a self-propelled Industrial crane specifically designed for use on Shipboards. All needed operations as well as maintenance and drydock activities. It includes a 3-section proportional hydraulically extended boom.

Capacity

30,000 lbs. (13,600 kg)

Sheave Height

45' 4"

Horizontal Reach

36'

Height

8' (2.44 m)

Width

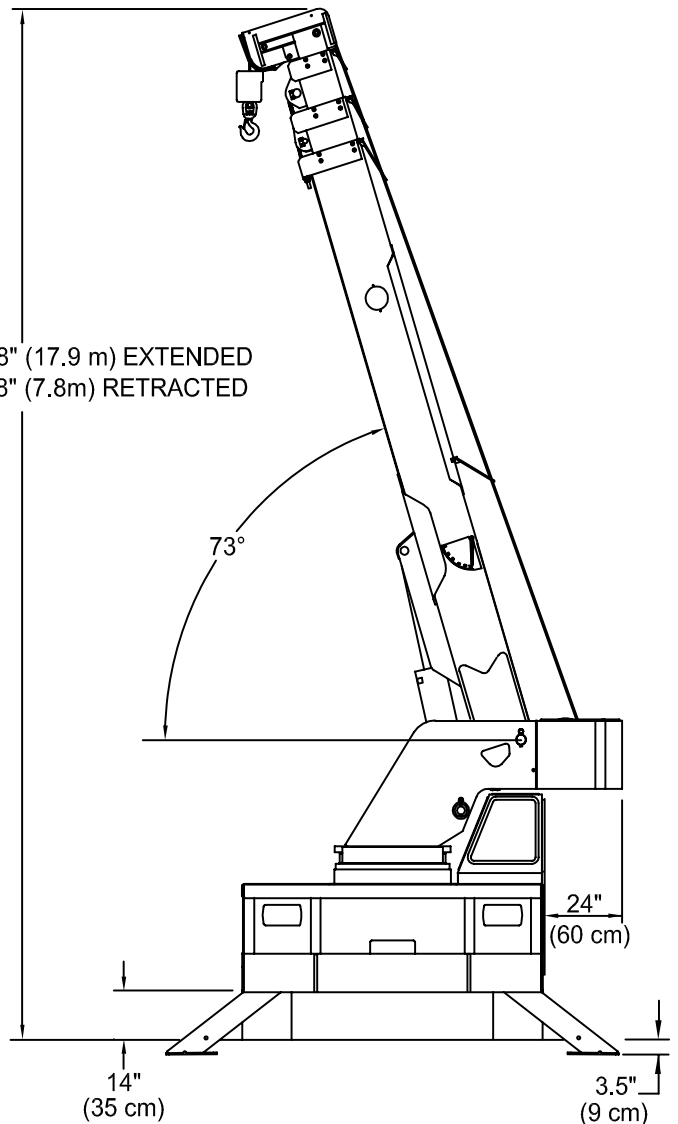
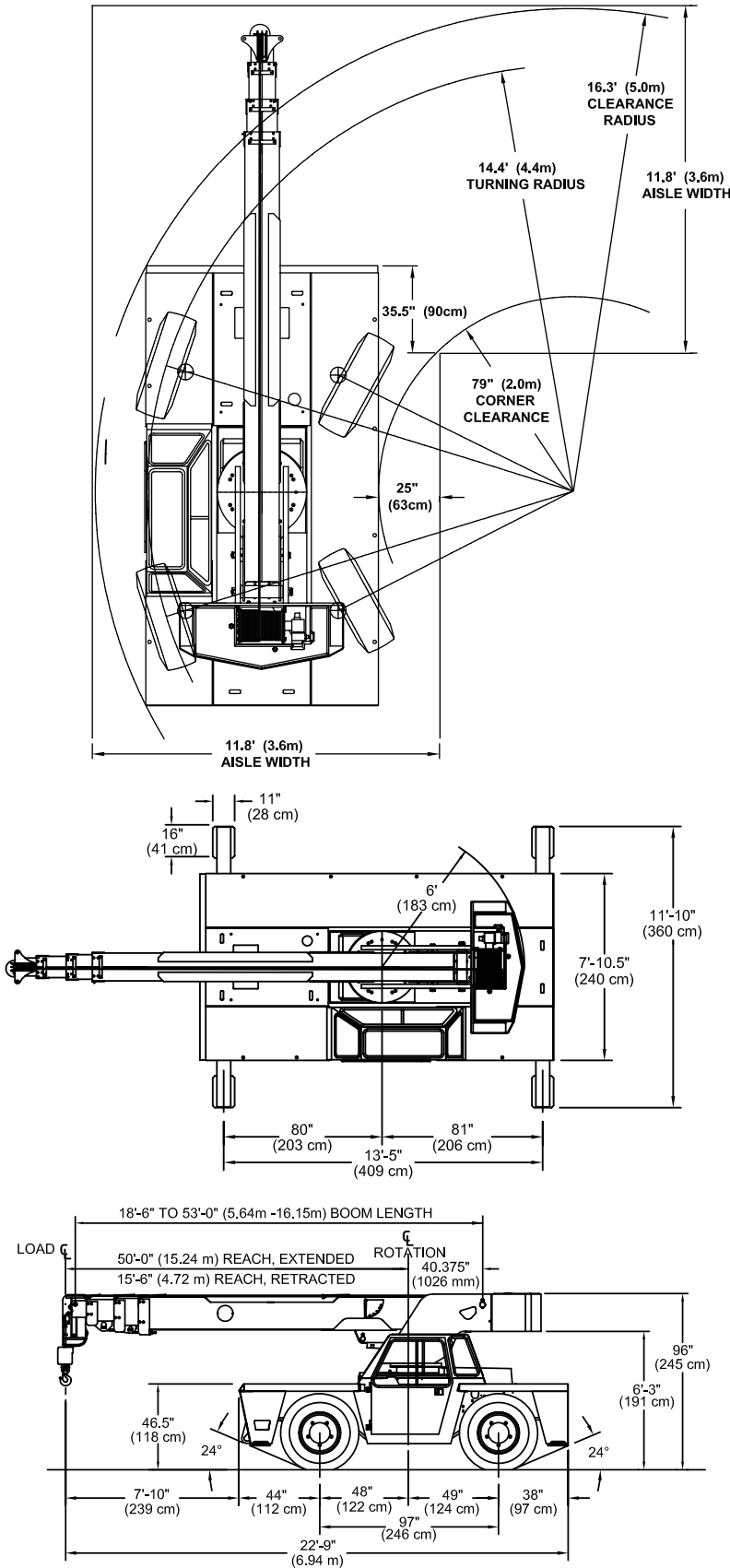
7' 10.5" (2.4 m)

bmc[®] BRODERSON[®]
Manufacturing Corp.

www.broderick.com

IC-200-2SJ 4x4

DIMENSIONS



IC-200-2SJ 4x4

General Specifications



GENERAL

	ROTATION	ELEVATION	EXTENSION
Boom Movement	Continuous	0° to 73°	34'6" (10.5m)
Boom Speeds	1.8 RPM	20 sec.	50 sec.
Weight Total	29,310 lbs.		
Gradeability	54% (28°)		
Turning Radius	14' 4"		

ENGINE

Make	CUMMINS
Model	QSB3.3L
Type	Diesel, Jet Fuel
Cylinder	4
Displacement	3.3L
HP @ Gov. Speed	99HP

TRANSMISSION

POWERSHIFT TRANSMISSION with 4-speeds forward and reverse. Provides powershifts at any engine speed in any gear. All shifting is done with a single lever electrical control mounted on the steering column. Equipped with torque convertor and transmission oil cooler. Torque convertor has stall ratio of 2.2:1.

GEAR RATIO:

First - 5.72:1, Second - 3.23:1, Third - 1.77:1, Fourth - 1.00:1

AXLES

FRONT

Planetary drive/steer front axle with 15.78 to 1.0 ratio. Differential equipped with "limited slip" feature. Front axle mounted rigidly to frame.

TRANS. GEAR	SPEED	DRAWBAR PULL*
First	3 MPH	17,000*
Second	5 MPH	8,900*
Third	10 MPH	5,100*
Fourth	18 MPH	2,700*

*Drawbar pull is calculated for GM 4.3L engine.

REAR

4-Wheel Drive:

Steering axle with 1-1/2 degree oscillation in either direction.

STEERING

Full hydraulic steering unit with two 3-inch (7.6 cm) cylinders attached to each axle. Allows limited steering when engine is not running. A switch on the control panel is used to select rearwheel steering, four-wheel steering or crab steering. Electronic sensors and control box automatically align the steering when a new mode is selected.

BRAKES

Service: Split-system, 4-wheel hydraulic-boosted multiple plate wet disc brakes.

Parking: Hand lever actuated disc-type parking brake on transmission.

TIRES

15x22.5, 16-ply rating.

OPERATOR COMPARTMENT

Provides one-position access to all chassis & crane functions. Includes adjustable operator's seat, retracting seat belts, fire extinguisher & bubble level.

CHASSIS

CARGO DECK

66 square feet (6 m²) of deck area. 17,000 lbs (7,700 kg) capacity on deck when load is centered over or between axles. Steps located on front corners.

LIFTING RINGS

Lifting rings at each corner of cargo deck so sling can be attached for lifting crane.

OUTRIGGERS

Four hydraulic outriggers of box beam construction with direct connected holding valves. Independent controls for each outrigger. Outrigger pad dimension: 11" x 16" (28cm x 41cm).

HEADLIGHT & TAILLIGHT GRILLES

Welded steel protective grilles for headlights and taillights. Includes different colored lens.

ACCESSORY STORAGE BOX

Storage box is 14" (35cm) deep x 10-1/2" (26cm) long x 36-1/2" (93cm) wide, located in front cargo deck.

LIGHTING PACKAGE

One pair headlights with high and low beams, tail, brake and turn signal lights and back-up lights in rear, front turn signals and emergency flasher switch at operator's station.

DISPLAY

Fuel gauge and hourmeter records hours only during actual engine operations. Also includes warning lights for low oil and transmission pressure, check engine, high coolant and transmission temperature, turn signals, high beams, hazard lights, parking brake and four-wheel drive.

BACK-UP ALARM

Provides pulsating sound when transmission is in reverse.

OUTRIGGER ALARM SYSTEM

Two-tone alarm is activated when "outrigger down" controls are operated.

ELECTRICAL (12-VOLT SYSTEM)

HYDRAULIC

TANDEM PUMP direct-driven by engine crankshaft, rated at 29 GPM (110 L/min) and 34 GPM (129 L/min) at rated RPM. Hydraulic oil tank capacity of 54 gallons (204 L).

BOOM ASSEMBLY

THREE-SECTION BOOM ASSEMBLY

equipped with bearing pads, double-acting hydraulic cylinders with direct-connected holding valves and boom angle indicator on each side of boom.

BOOM ROTATION

Heavy-duty ball bearing rotation gear with external teeth. Rotation is powered by hydraulic motor and worm gear drive.

BOOM HOIST

Turret mounted planetary gear hoist hydraulically powered with a bare drum line pull of 10,000 lbs. (4536 kg) at a line speed of 100 FPM (30 m/min). Includes downhaul weight, swivel hook and sheave block for 4-part line.

ANTI-TWO-BLOCK DEVICE

Prevents damage to hoist rope and/or crane components from pulling load hook against tip.

SHEAVE BLOCK, FOUR PART LINE

Double sheave block for 4-part line requirements.

RATED CAPACITY LIMITER

Warns operator of impending overload with audible & visual signals. Prevents overload by stopping boom functions that cause overloads.

DRUM ROTATION INDICATOR

Tactile feedback to operator when drum is rotating.



Main Features

RATED CAPACITY LIMITER
Standard

CAPACITY ON OUTRIGGERS
30,000 lbs. (13,600 kg)

PICK AND CARRY CAPACITY
up to 17,000 lbs. (7,711 kg)

HEIGHT
8' (2.45 m)

WIDTH
7' 10.5" (2.4 m)

BOOM ROTATION
360° Continuous

SHEAVE HEIGHT
45' 4"

HORIZONTAL REACH
36'

FOUR-WHEEL STEER
Standard

FOUR-WHEEL DRIVE
Optional

POWERSHIFT TRANSMISSION
Standard

**FULLY HYDRAULIC CONTROLS FOR
SMOOTH, PRECISE OPERATIONS**

**INDEPENDENT OUTRIGGER
CONTROLS**

DIESEL OR JET FUEL ENGINE

EXTENSIVE TESTING:

MtIL-S-901
Mil-PRF-2104
MIL-DTL-5624
MIL-DTL-83133
MIL-DTL-16884
MIL-PRF-17672
MIL-STD-461
MIL-STD-464
MIL-STD-810
NAVPAC P-307
MIL-STD-209
Reliability / Endurance
testing
Emergency stopping /
Parking brake:
NAVSUP approved

AXLE & STEERING

4-Wheel Steer & 2-Wheel Drive

Tire

Non-Marking Tires

Chassis

Tire Downs

Bridle

Front

Rearview Mirrors

One mounted on right-hand deck stake and
one mounted on left-hand deck stake.

OPERATOR COMPARTMENT

All Weather Cab

Rigid-mounted canopy section and
removable hinged door. Includes heater,
electric windshield wiper, one sliding glass
window in the door, & one in the right side
of the canopy. Defroster fan & dome light
included.

Additional Features

INCLUDED ITEMS:

Strobe Lights

Yellow strobe light mounted on each side of
turret weight box.

Boom Work Lights

One work light mounted to boom to light
boom tip and one work light mounted to
turret to light ground under boom tip.

Work Lights - Rear

Two work lights recessed in rear bumper'

RCL Light Bar

3 color light bar for external indication of
load status

Colored Lens

Headlight and worklight colored lens -
stored in operator compartment.

Heating Package

Battery, oil heater, fuel heater, block heater,
and oil pan heater.

CONSULT THE IC-200-J ENGINEERING SPEC FOR ADDITIONAL INFORMATION.

Broderson Cranes are manufactured to ISO 9001:2015 certified standards and have a market leading reputation for quality and reliability. Broderson Cranes are engineered for operating efficiency and are easy to operate and maintain.

An extensive network of full-service dealers offer parts and service support by factory-trained technicians.

For additional options or special equipment not listed, please consult your dealer salesperson or contact Broderson Manufacturing Corp.

BRODERSON®
Manufacturing Corp.

14741 West 106th Street
Lenexa, KS 66215 USA

(913) 888-0606
www.Broderson.com

Dimensions and
values shown are for
reference purposes only.
Specifications subject to
change.

