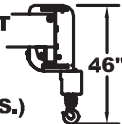
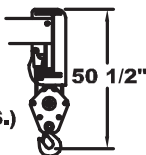


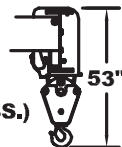
USE SINGLE PART
LOAD LINE FOR
LOADS TO 7500
LBS. (WT. 125 LBS.)



USE TWO PART
LOAD LINE FOR
LOADS TO 15000
LBS. (WT. 200 LBS.)



USE FOUR PART
LOAD LINE FOR
LOADS TO 30000
LBS. (WT. 210 LBS.)



CAPACITIES IN POUNDS FOR OPERATION ON FIRM LEVEL SURFACE								
LOAD RADIUS FEET	MAIN BOOM ONLY				BOOM EXTENSION			
	ON RUBBER		ON OUTRIGGERS		ON RUBBER		ON OUTRIGGERS	
	360°	FRONT	360°	FRONT	360°	FRONT	360°	FRONT
6	16000	16400	30000	30000	----	----	----	----
8	12500	13000	22400	22400	----	----	----	----
10	10000	10500	18500	18500	7500	7500	7500	7500
12	8050	8700	15700	15700	7500	7500	7500	7500
14	6500	7200	13500	13500	7500	7500	7500	7500
16	5300	6200	10800	10800	6150	7500	7500	7500
18	4450	5400	9550	9550	5000	6450	7500	7500
20	3700	4700	8550	8550	4200	5400	7500	7500
22	3150	4200	7700	7700	3550	4650	6850	6850
24	2650	3700	6950	6950	3050	4000	6250	6250
26	2300	3200	6300	6350	2650	3500	5750	5750
28	1950	2800	5550	5800	2300	3100	5300	5300
30	1700	2450	4800	5300	2000	2700	4900	4900
32	1450	2150	4200	4900	1700	2400	4550	4550
34	1250	1850	3700	4500	1500	2100	4250	4250
38	900	1300	2950	3850	1150	1650	3500	3750
42	650	950	2400	3350	850	1300	2950	3350
46	400	650	1850	2900	600	1050	2450	2950
50	0	550	1750	2500	400	800	2050	2600
54	----	----	----	----	0	600	1700	2300
58	----	----	----	----	0	400	1350	2000
62	----	----	----	----	0	300	1150	1750
66	----	----	----	----	0	0	900	1500
BOOM EXT. ANGLE	BOOM EXTENSION - STRAIGHT OR OFFSET							
	MAIN BOOM ANGLE							
	0°	15°	30°	40°	50°	60°	70°	
0°	3000	3100	3450	3900	4650	6000	7500	
15°	---	3000	3000	3000	3000	3700	5000	
30°	---	---	2500	2500	2600	3100	3800	

Boom extension deduct: 400 lbs. when stowed on main boom.

Deck load capacity 17,000 lbs, with empty boom retracted over front, deck load centered to rear of front axle, less than 2mph, 200ft. Max in 30 minutes on smooth pavement.

LOAD RADIUS IS THE HORIZONTAL DISTANCE FROM THE CENTER OF ROTATION OF THE UNLOADED CRANE TO THE VERTICAL LOAD LINE WITH THE LOAD APPLIED.

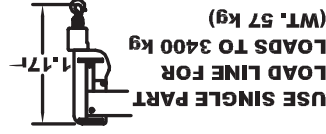
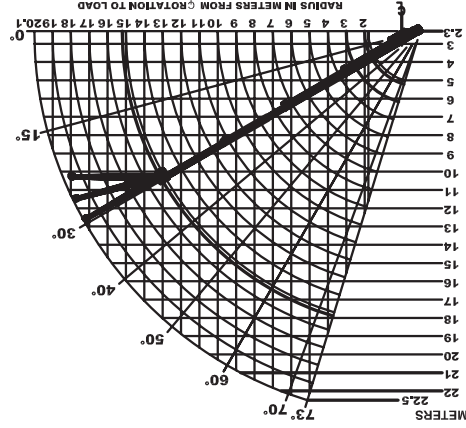
EXCEEDING CAPACITY RATINGS OR APPLYING SIDE LOADS TO THE BOOM OR BOOM EXTENSION IS MISUSE, HAZARDOUS, AND VOIDS WARRANTY.

CAUTION: BOOM EXTENSION LOADS MUST NOT EXCEED MAIN BOOM CAPACITY. DO NOT PICK AND CARRY WITH BOOM EXTENSION DEPLOYED.

ARE 85% OF TIPPING LOADS. CAPACITIES ON RUBBER ARE 75% OF TIPPING LOADS. CAPACITIES ON IN & DOWN OUTRIGGERS ARE LESS THAN 85% OF TIPPING LOADS. CAPACITIES BELOW BOLD LINE ARE LIMITED BY TIPPING. OTHER CAPACITIES ARE LIMITED BY STRUCTURAL OR HYDRAULIC CAPABILITY.

IC-200-3J Industrial Crane

Load Chart Metric



LOAD RADIUS	ON RUBBER		ON OUTRIGGERS		ON RUBBER		ON OUTRIGGERS	
	METERS	360°	FRONT	360°	FRONT	360°	FRONT	
22.5	7260	7440	13600	12100	13600	12100	12100	
21	6730	6940	13000	11500	13000	11500	11500	
20	6300	6510	12400	10900	12400	10900	10900	
19	5870	6080	11800	10300	11800	10300	10300	
18	5440	5650	11200	9700	11200	9700	9700	
17	5010	5220	10600	9100	10600	9100	9100	
16	4580	4790	10000	8500	10000	8500	8500	
15	4150	4360	9400	7900	9400	7900	7900	
14	3720	3930	8800	7300	8800	7300	7300	
13	3290	3500	8200	6700	8200	6700	6700	
12	2860	3070	7600	6100	7600	6100	6100	
11	2430	2640	7000	5500	7000	5500	5500	
10	2000	2210	6400	4900	6400	4900	4900	
9	1570	1780	5800	4300	5800	4300	4300	
8	1140	1350	5200	3700	5200	3700	3700	
7	710	920	4600	3100	4600	3100	3100	
6	280	490	4000	2500	4000	2500	2500	
5.5	370	580	3700	2200	3700	2200	2200	
5	460	670	3400	1900	3400	1900	1900	
4.5	550	760	3100	1600	3100	1600	1600	
4	640	850	2800	1300	2800	1300	1300	
3.5	730	940	2500	1000	2500	1000	1000	
3	820	1030	2200	700	2200	700	700	
2.5	910	1120	1900	400	1900	400	400	
2	1000	1210	1600	100	1600	100	100	
1.8	1020	1230	1500	0	1500	0	0	
1.6	1040	1250	1400	---	1400	---	---	
1.4	1060	1270	1300	---	1300	---	---	
1.2	1080	1290	1200	---	1200	---	---	
1.0	1100	1310	1100	---	1100	---	---	
0.8	1120	1330	1000	---	1000	---	---	
0.6	1140	1350	900	---	900	---	---	
0.4	1160	1370	800	---	800	---	---	
0.2	1180	1390	700	---	700	---	---	
0	1200	1410	600	---	600	---	---	
15°	1360	1400	1360	---	1360	---	---	
30°	1130	1560	1130	---	1130	---	---	
40°	60	1770	60	---	60	---	---	
50°	1180	1360	1180	---	1180	---	---	
60°	1410	1680	1410	---	1410	---	---	
70°	1720	2720	1720	---	1720	---	---	

Boom extension deduct: 182 kgs. when stowed on main boom.
Deck load capacity 7,700 kg., with empty boom retracted over front, deck load centered to rear of front axle. Max in 30 minutes on smooth pavement.

LOAD RADIUS IS THE HORIZONTAL DISTANCE FROM THE CENTER OF ROTATION OF THE UNLOADED CRANE TO THE VERTICAL LOAD LINE WITH THE LOAD APPLIED. EXCEEDING CAPACITY RATINGS OR APPLYING SIDE LOADS TO THE BOOM OR LOADS TO THE BOOM OR BOOM EXTENSION IS MISUSE, HAZARDOUS, AND VOIDS WARRANTY. **CAUTION:** BOOM EXTENSION LOADS MUST NOT EXCEED MAIN BOOM CAPACITY. DO NOT PICK AND CARRY WITH BOOM EXTENSION DEPLOYED. ARE 85% OF TIPPING LOADS. CAPACITIES ON RUBBER ARE CAPACITIES ON IN & DOWN CAPACITIES BELOW BOLD LINE ARE LIMITED BY TIPPING. OTHER CAPACITIES ARE LIMITED BY STRUCTURAL OR HYDRAULIC CAPABILITY.